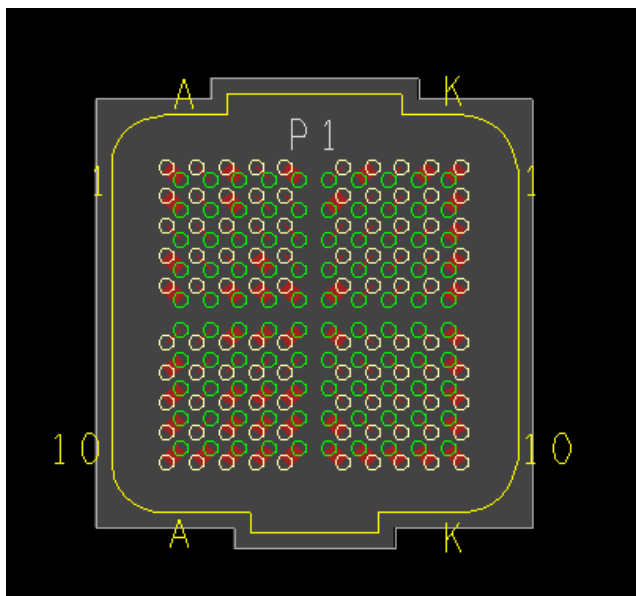
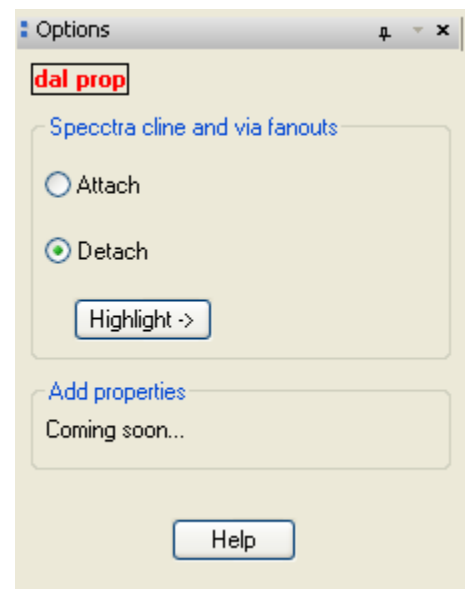


## Prop

Add/Delete/Edit properties

Features:

- ❑ Allows for the sticky attachment and detachment of clines, vias, shapes and text to symbols.
- ❑ Removes the sticky fan out properties applied in the spectra router.
- ❑ Highlight all attached objects.
- ❑ New features coming soon for adding and deleting properties easily by selection.



[Fanouts created with create fanout or Spectra router](#)

# Help

---

