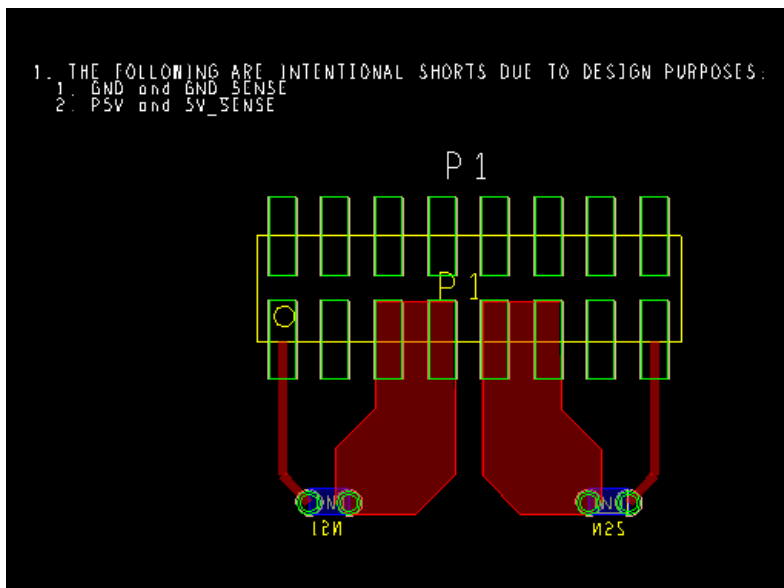


## NetShort

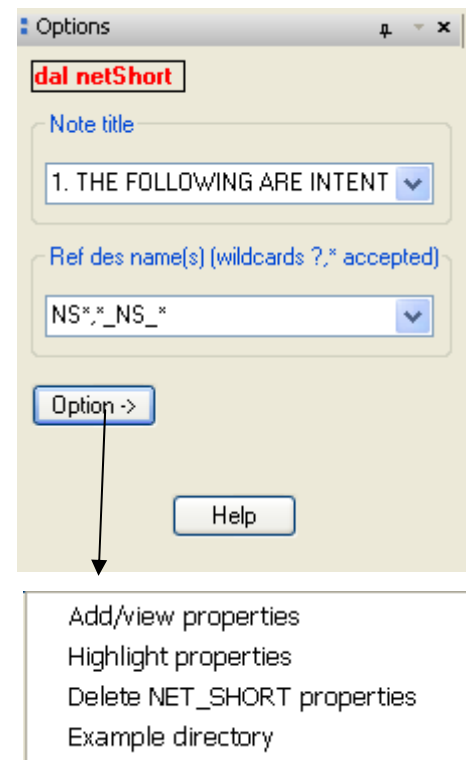
Adds the NET\_SHORT property for remote sense lines automatically and generates a fabrication drawing note.

Features:

- ❑ Sample databases for schematic, .brd and .dra file provided in the share directory.
- ❑ Automates the process of adding the net\_short property in Allegro.
- ❑ Creates a note that can be imported into the fabrication drawing.

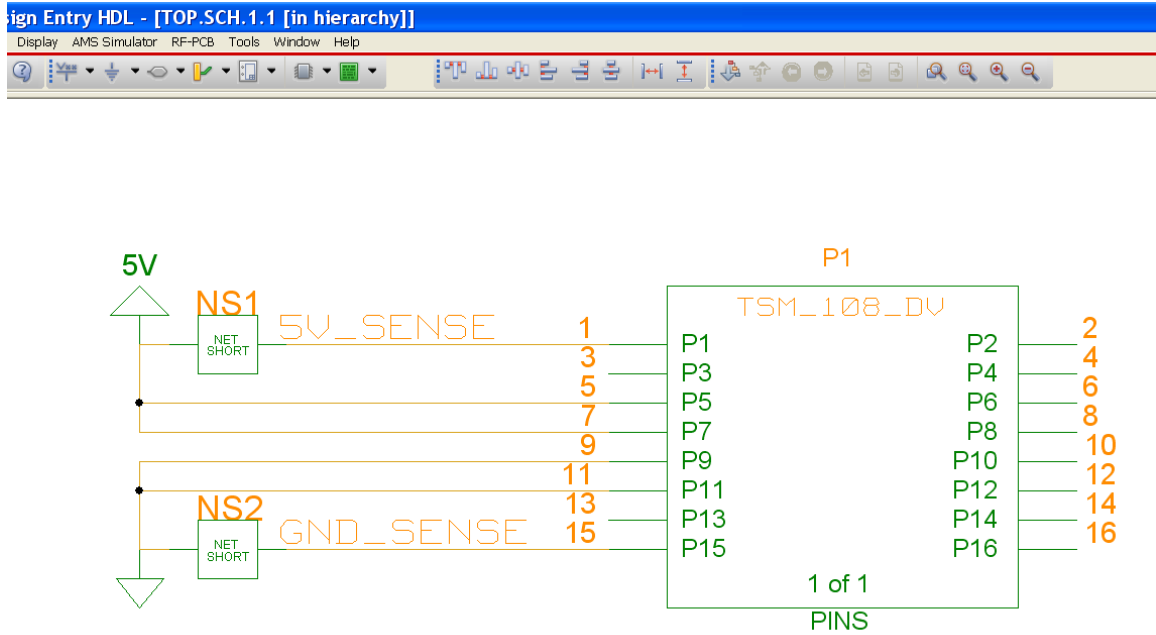


[Sample database provided in the share directory](#)



# Example

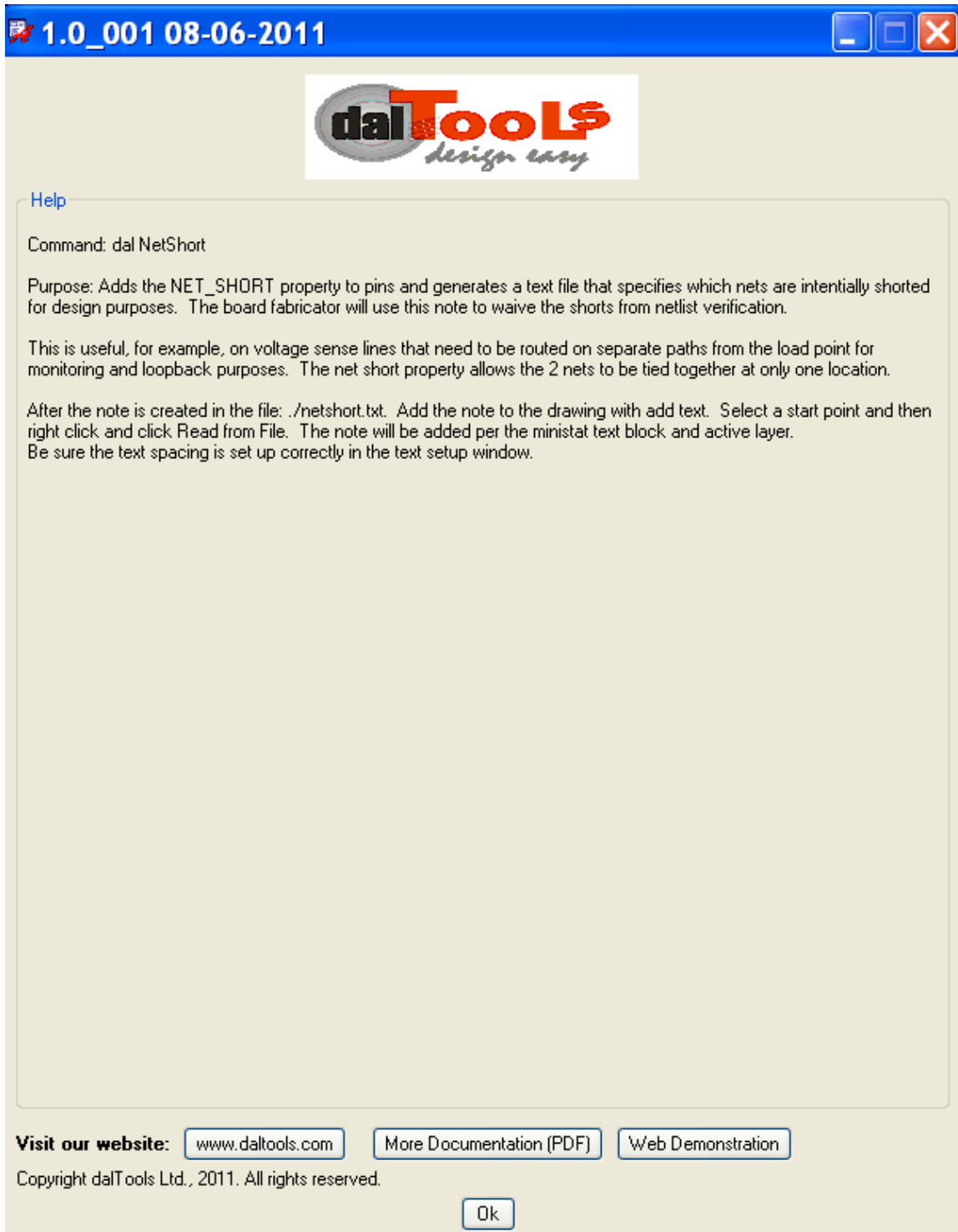
---




[Sample schematic provided in the share directory](#)

# Help

---



**1.0\_001 08-06-2011**



[Help](#)

Command: dal NetShort

Purpose: Adds the NET\_SHORT property to pins and generates a text file that specifies which nets are intentionally shorted for design purposes. The board fabricator will use this note to waive the shorts from netlist verification.

This is useful, for example, on voltage sense lines that need to be routed on separate paths from the load point for monitoring and loopback purposes. The net short property allows the 2 nets to be tied together at only one location.

After the note is created in the file: ./netshort.txt. Add the note to the drawing with add text. Select a start point and then right click and click Read from File. The note will be added per the minitast text block and active layer. Be sure the text spacing is set up correctly in the text setup window.

**Visit our website:** [www.daltools.com](http://www.daltools.com) [More Documentation \(PDF\)](#) [Web Demonstration](#)

Copyright dalTools Ltd., 2011. All rights reserved.

[Ok](#)