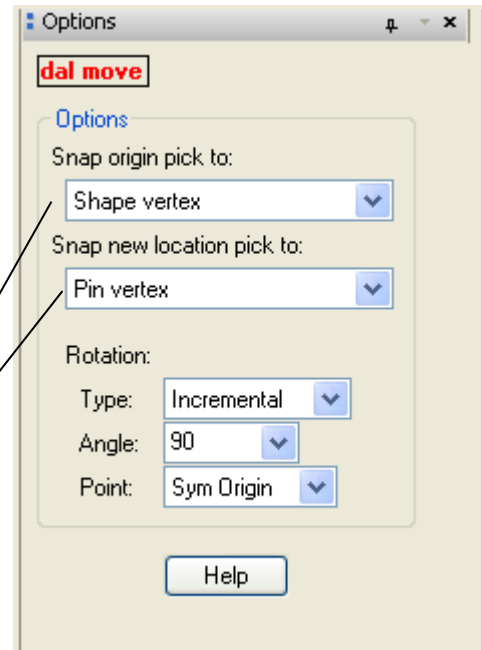
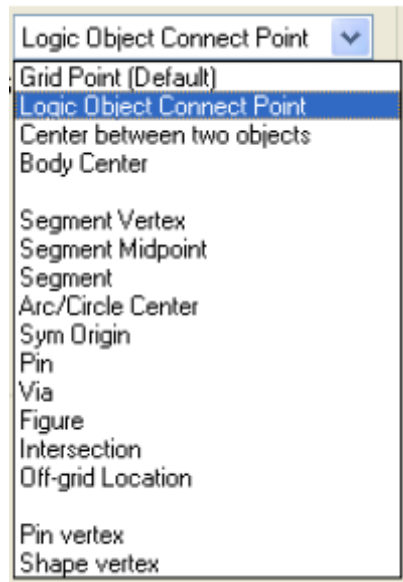


Move

Move objects with enhanced object snap.

Features:

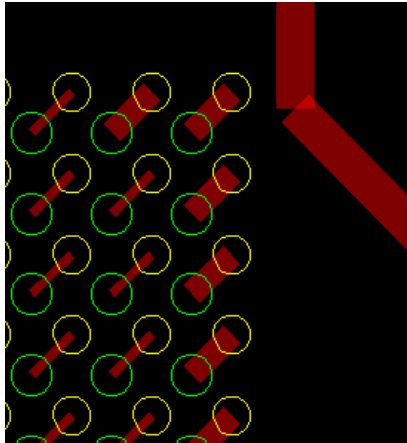
- ❑ Operates like the standard move command except it includes enhanced object snapping capabilities.
- ❑ Logic object connect point, center between two objects, pin vertex and shape vertex are especially useful



Video demonstration available at:

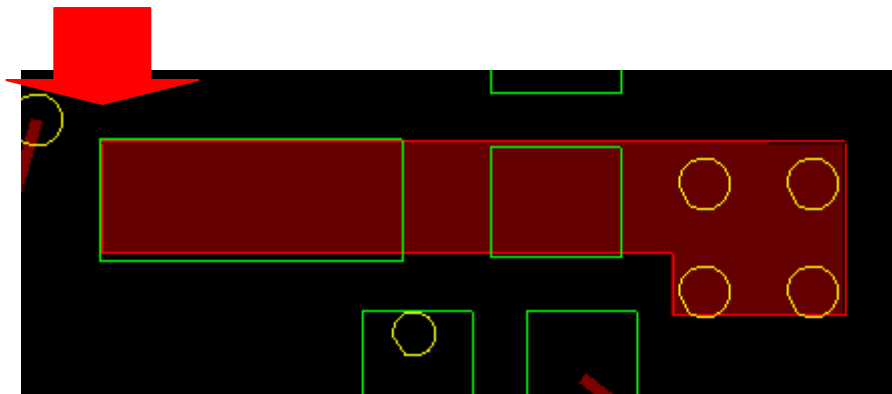
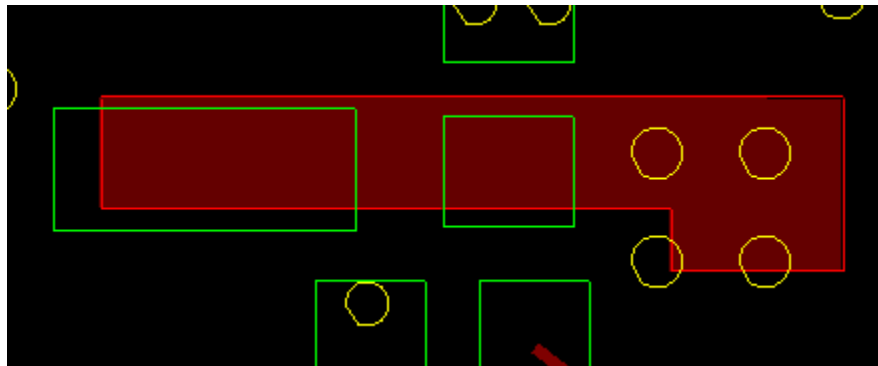
www.dalTools.com

Example



Center between two objects

(Vias centered between two diagonal bga pads)



Snap from shape vertex to pin vertex

Help

