

## Ipick

---

Allows for the movement of objects with the keyboard arrow keys by grid value increment. For example, while in the move command, pressing the (SHIFT) arrow keys moves the part to the next grid location.

Features:

- ❑ It is recommended that 4 aliases as follows be set in your env file:

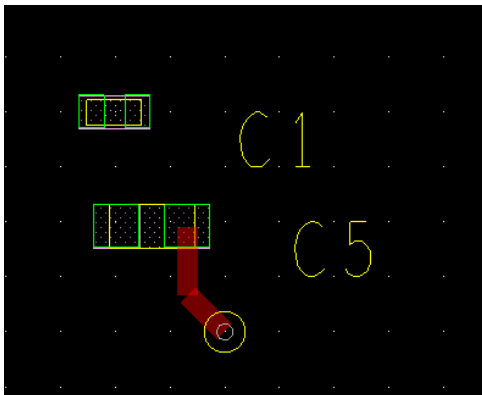
alias SUp dal ipick up

alias SDown dal ipick down

alias SRight dal ipick right

alias SLeft dal ipick left

However, if you do not have these set you may just type dal ipick and they will be set temporarily in the current database.




Video demonstration available at:

[www.dalTools.com](http://www.dalTools.com)

# Help



1.0\_003 04-27-2017



Help

Command: dal ipick

Purpose: Allows for the movement of objects with the keyboard arrow keys by grid value increment.  
For example, while in the move command, pressing the (SHIFT) arrow keys moves the part to the next grid location.

It is recommended that 4 aliases as follows be set in your env file:

```
alias SUp dal ipick up
alias SDown dal ipick down
alias SRight dal ipick right
alias SLeft dal ipick left
```

However, if you do not have these set you may just type dal ipick and they will be set temporarily in the current database.

Type: "dal ipick help" to see this page.

Visit our website: [www.daltools.com](http://www.daltools.com) More Documentation (PDF) Web Demonstration

Copyright dalTools 2017. All rights reserved.

Ok