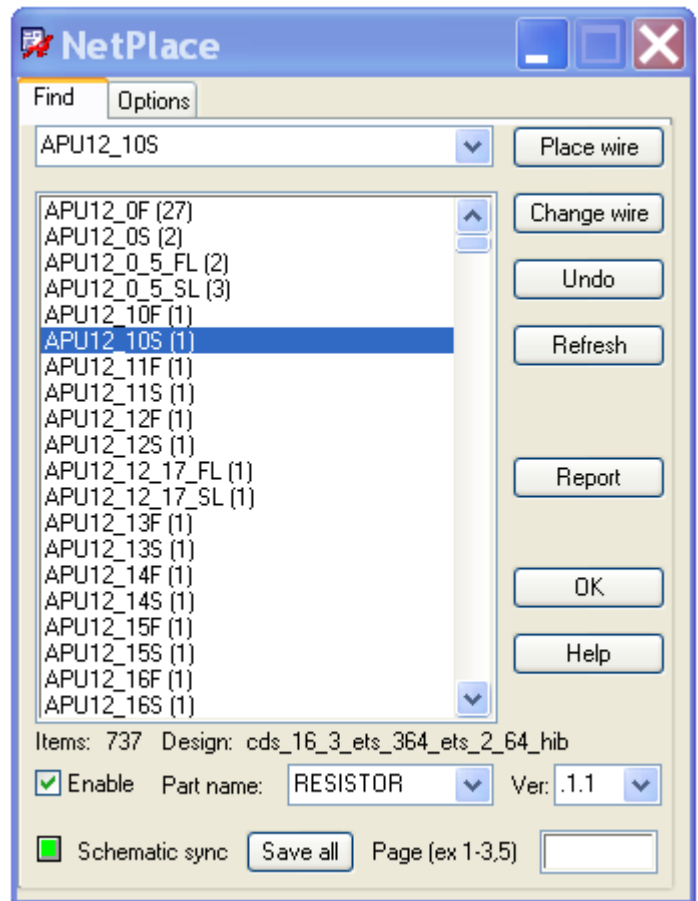


HdlNetPlace

Allows the user to enter wires with a signame property selected from a menu based on existing signames already in the schematic.

Features:

- Automatic signal naming preventing typos.
- Optional part addition at wire end point.
- Text report with netlist information.
- Signame list filtered by page number.
- Change signame button.



P113 A3 APU12_6_11_SL

P113 B3 APU12_6_11_FL

P113 B3 APU12_0F



?

Example 1

```
1 Net report: May 29 12:54:41 2012 Net count: 742 with filter: "  
2  
3 1 (29) APUL2_OF  
4     1 [Page 1] i81 RESISTOR [Pin 2]  
5     2 [Page 1] i80 RESISTOR [Pin 2]  
6     3 [Page 1] i79 RESISTOR [Pin 1]  
7     4 [Page 1] i77 RESISTOR [Pin 2]  
8     5 [Page 1] i76 RESISTOR [Pin 2]  
9     6 [Page 1] i75 RESISTOR [Pin 1]  
10    7 [Page 1] i74 RESISTOR [Pin 2]  
11    8 [Page 1] i73 RESISTOR [Pin 2]  
12    9 [Page 1] i72 RESISTOR [Pin 2]  
13    10 [Page 1] i69 ETS600_POGO_143P [Pin 1]  
14    11 [Page 1] i68 ETS600_POGO_143P [Pin 1]  
15    12 [Page 1] i65 ETS600_POGO_143P [Pin 1]  
16    13 [Page 1] i54 ETS600_POGO_143P [Pin 1]  
17    14 [Page 1] i47 ETS600_POGO_143P [Pin 1]  
18    15 [Page 1] i38 ETS600_POGO_143P [Pin 1]  
19    16 [Page 1] i37 ETS600_POGO_143P [Pin 1]  
20    17 [Page 1] i36 ETS600_POGO_143P [Pin 1]  
21    18 [Page 1] i35 ETS600_POGO_143P [Pin 1]  
22    19 [Page 1] i34 ETS600_POGO_143P [Pin 1]  
23    20 [Page 1] i33 ETS600_POGO_143P [Pin 1]  
24    21 [Page 1] i32 ETS600_POGO_143P [Pin 1]  
25    22 [Page 1] i31 ETS600_POGO_143P [Pin 1]  
26    23 [Page 1] i28 ETS600_POGO_143P [Pin 1]  
27    24 [Page 1] i27 LED [Pin C]  
28    25 [Page 1] i27 LED [Pin A]  
29    26 [Page 1] i25 ETS600_POGO_143P [Pin 1]  
30    27 [Page 6] i258 RESISTOR [Pin 2]  
31    28 [Page 6] i257 ETS600_POGO_112P [Pin 1]  
32    29 [Page 6] i2 ETS600_POGO_112P [Pin 1]  
33 2 (2) APUL2_OS  
34     1 [Page 1] i22 ETS600_POGO_143P [Pin 1]  
35     2 [Page 6] i1 ETS600_POGO_112P [Pin 1]  
36 3 (2) APUL2_0_5_FL  
37     1 [Page 1] i26 ETS600_POGO_143P [Pin 1]  
38     2 [Page 6] i26 ETS600_POGO_112P [Pin 1]  
39 4 (3) APUL2_0_5_SL  
40     1 [Page 1] i83 RESISTOR [Pin 2]  
41     2 [Page 1] i82 RESISTOR [Pin 1]  
42     3 [Page 6] i25 ETS600_POGO_112P [Pin 1]  
43 5 (1) APUL2_10F  
44     1 [Page 6] i23 ETS600_POGO_112P [Pin 1]  
45 6 (1) APUL2_10S  
46     1 [Page 6] i20 ETS600_POGO_112P [Pin 1]  
47 7 (1) APUL2_11F  
48     1 [Page 6] i24 ETS600_POGO_112P [Pin 1]  
49 8 (1) APUL2_11S  
50     1 [Page 6] i22 ETS600_POGO_112P [Pin 1]  
51 9 (1) APUL2_12F  
52     1 [Page 6] i55 ETS600_POGO_112P [Pin 1]  
53 10 (1) APUL2_12S
```

[Sample connection report](#)

Help

1.0_000 05-29-2012

Help

Command: NetPlace

Purpose: Allows the user to enter wires with a signame property selected from a menu based on existing signames already in the schematic.

Already connected signames are displayed in the window along with the number of connected pins as a suffix (#).

Find tab ->

- Filter text box - Filters the signame list. Wildcards are accepted. For example, * and ?.
- List - By selecting a signame in the list, and then clicking on the place wire button, (or double clicking) a wire and signame property is automatically added.
- Change wire - Changes and existing signame property to the currently selected signame.
- Undo - Undo the latest changes.
- Refresh - Update the signame list and connection quantities.
- Report - Displays a text report with information about the signames per the filter text box settings.
- Ok - Quit.

Design - Shows the currently active design name.

Enable - Enables the part name addition at the end of the wire.

Part Name - Select or type in the name of the part to add at the end of the wire.

Ver - Select or type in the name of the part version to use.

Schematic sync - When green the schematic is in sync with the signame list in the schematic.

Save all - Saves all schematic pages. (hier write)

Page - Filters the signame list by page or page range.

Option tab ->

- Hide unnamed nets - Hides unnamed nets from the list.
- Hide global nets - Hides power and gnd nets from the list.
- Hide I/O ports - Hides net connections on input, output and IO ports from the list.

Use report text editor - When checked uses a searchable text editor instead of a text viewer.

Stay open on double click - When unchecked closes the gui after double clicking a signame entry.

View verilog.v file - Views the verilog.v input file in the searchable text editor.

Visit our website: www.daltools.com [More Documentation \(PDF\)](#) [Web Demonstration](#)

Copyright dalTools LLC., 2012. All rights reserved.

Ok