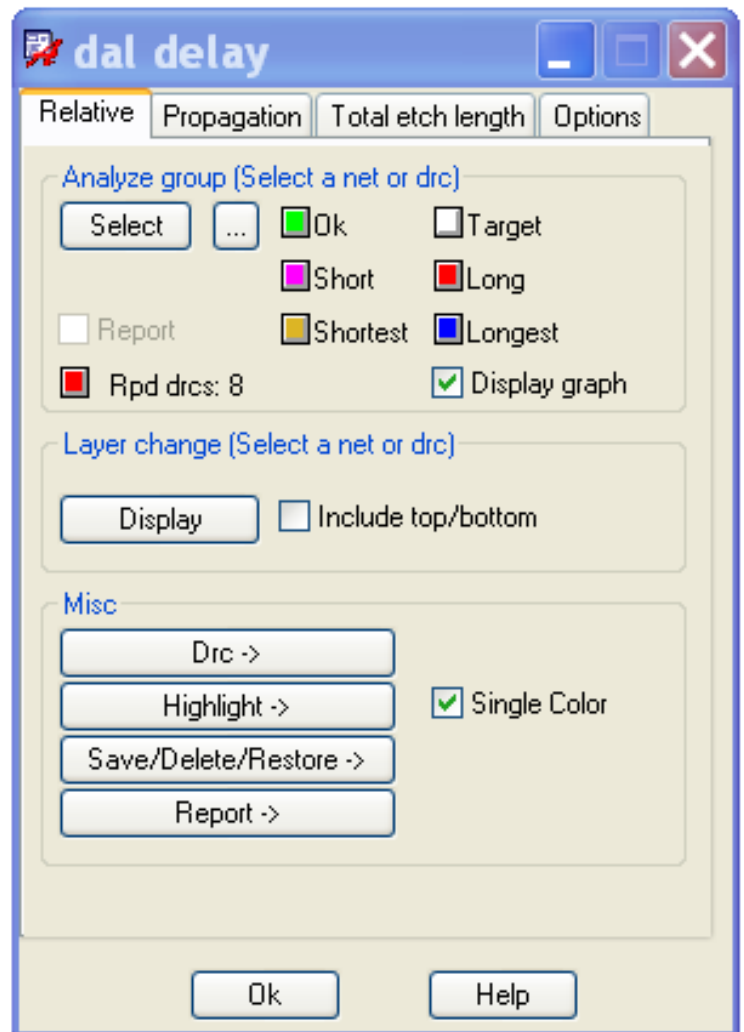


Delay

Speeds match length routing and DRC resolution of delay rules by an order of magnitude.

Features:

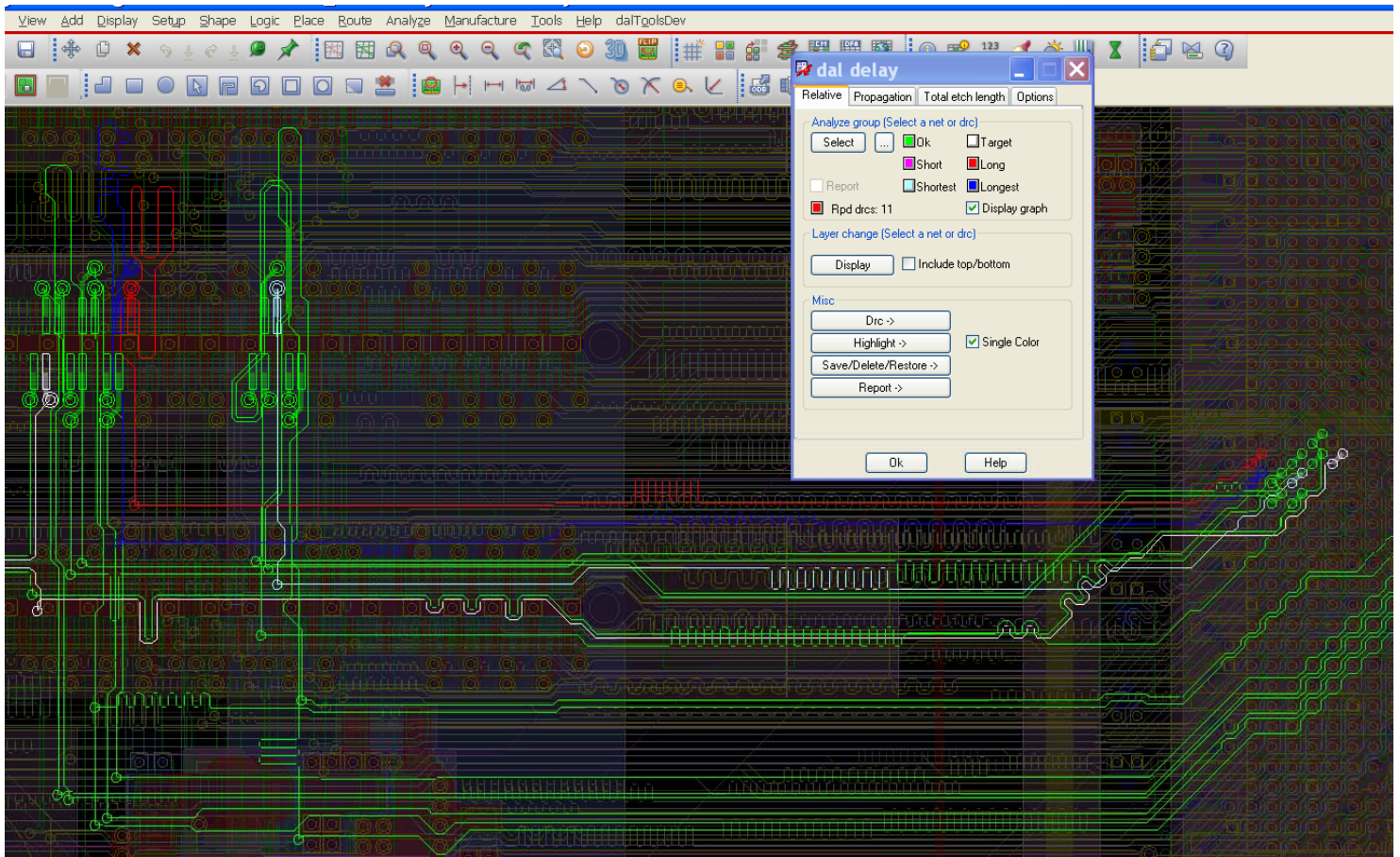
- ❑ Displays relative delay lengths by color for quick and easy length/delay matching.
- ❑ Displays a graph of the relative delay nets for a visual reference.
- ❑ Faster than using the constraint manager by an order of magnitude.
- ❑ Display net routing layers by selection.
- ❑ Numerous highlight features. For example, highlight all nets with RPD drcs.



Video demonstration available at:

www.dalTools.com

Relative Delay



Color coded length highlighting for quick and easy length identification

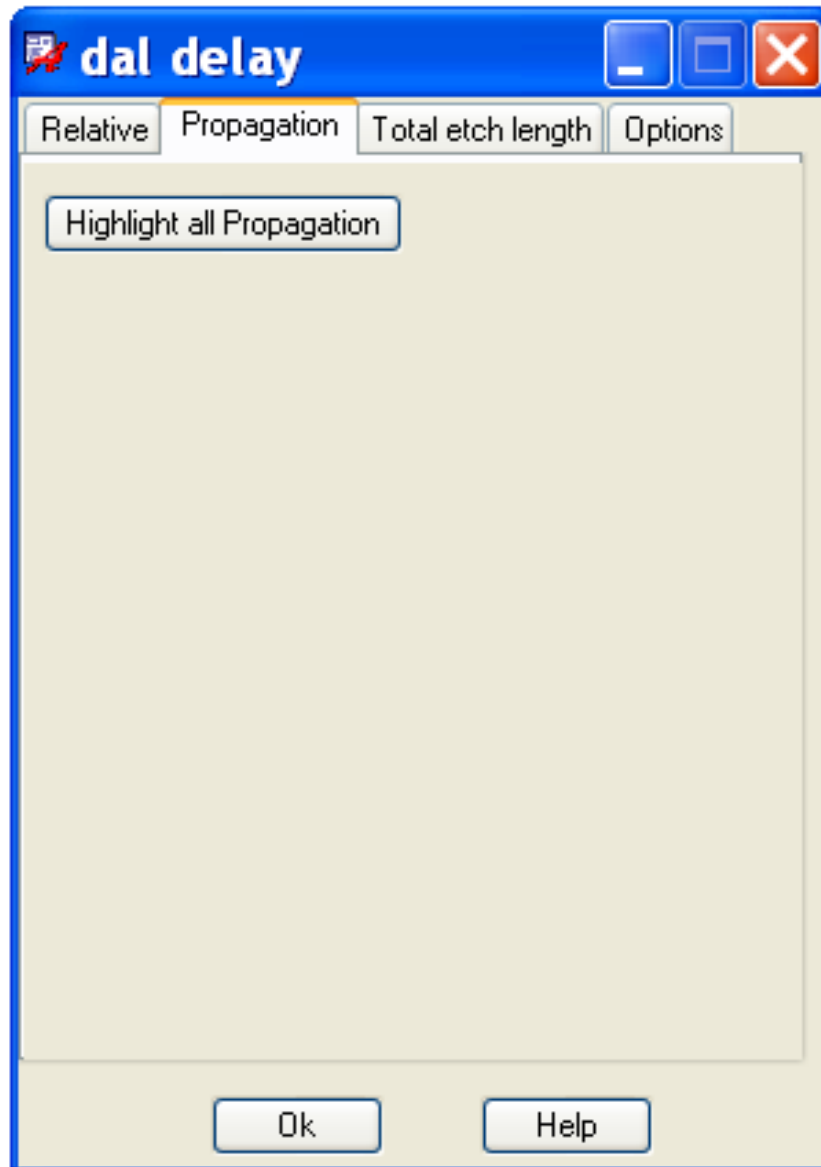
Relative Delay (continued)



Color coded length graph for quick and easy length and tolerance identification

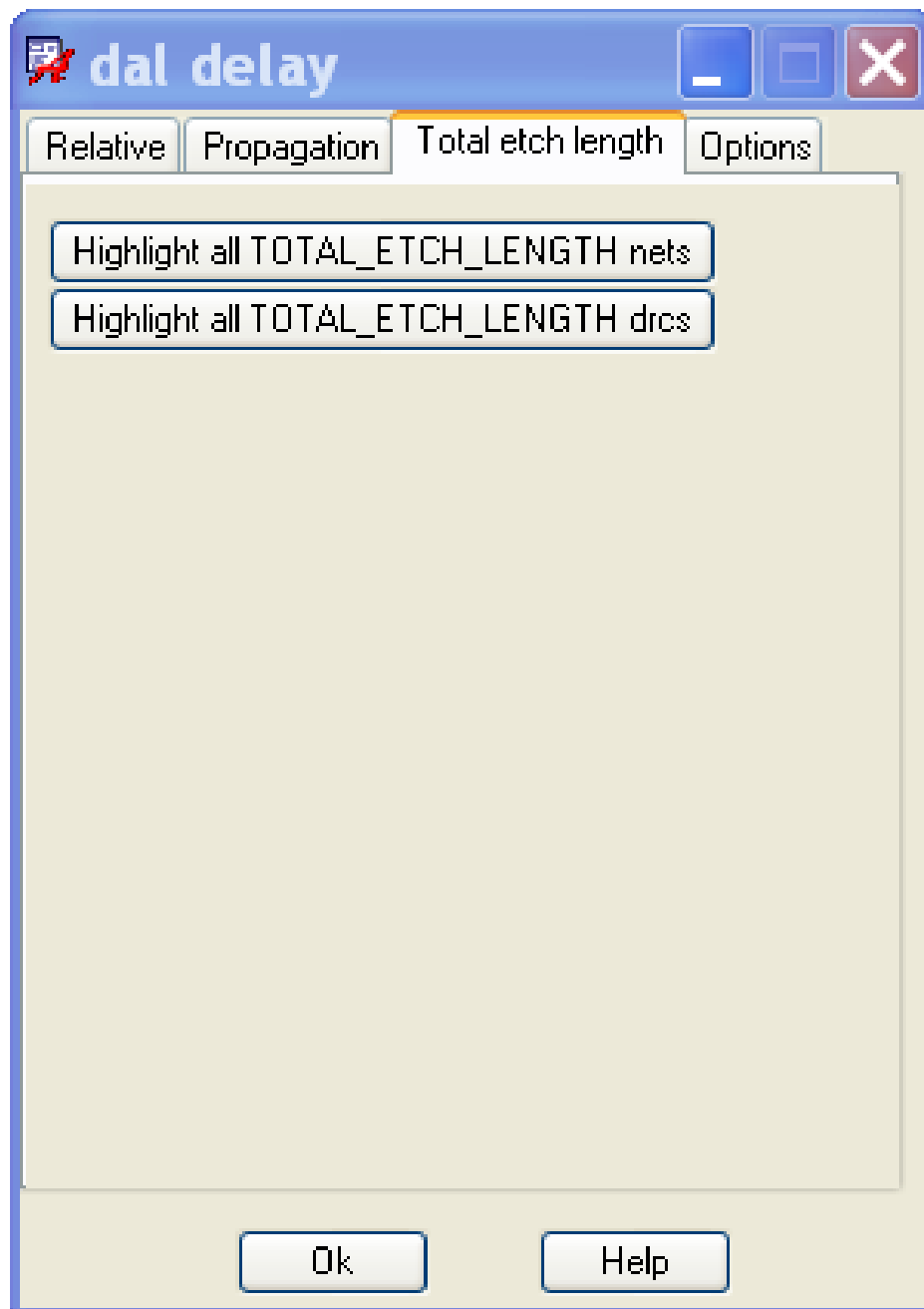
Propagation Delay

*New features will be added to this tab soon.



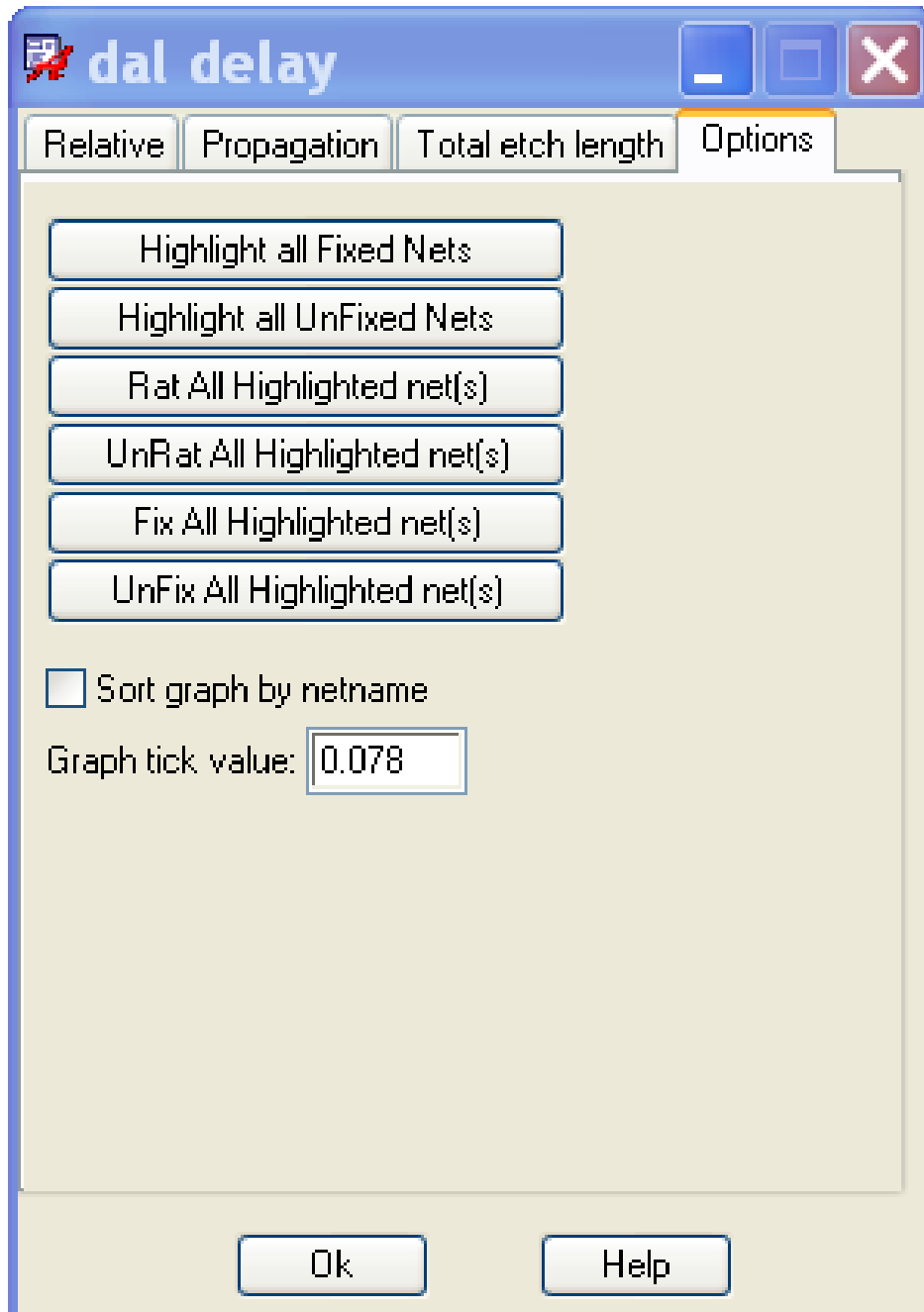
Total Etch Length

*New features will be added to this tab soon.



Options

*New features will be added to this tab soon.



Help

1.0_006 09-13-2011



Help

Command: dal delay

Purpose: Speeds match length routing and drc resolution of delay rules by an order of magnitude.

Relative tab

- Select - Allows selection of rpd by net or drc for analysis.
- ... - Opens another window where selections can be made by netname, match group or match group drc.
- Ok - Nets in this color are routed at the correct length.
- Target - The net in this color is the target.
- Short - Nets in this color are routed too short.
- Long - Nets in this color are routed too long.
- Shortest - The net in this color is the shortest net.
- Longest - The net in this color is the longest net.

Display graph - When checked the length/delay graph is displayed.

Display - Only the layers of the selected net are displayed.
Include top/bottom - When checked, the top and bottom layers of the selected net are also displayed.

Misc

- Drc -> Controls the global delay drc modes and allow drc by selection.
- Highlight -> Multiple options for relative delay drc and net highlighting.
- Save/Delete/Restore -> Allows saving, deleting and restoring rpd properties.
Useful for the custom smooth command since custom smooth will not smooth rpd nets correctly.
- Report - Reports the rpd drcs in a text file.

Propagation tab

- Highlight all Propagation - Highlights all nets with propagation_delay properties.

Total etch length tab

- Highlight all TOTAL_ETCH_LENGTH nets - Highlights all nets with total_etch_length properties.
- Highlight all TOTAL_ETCH_LENGTH drcs - Highlights all nets with total_etch_length drcs.

Next


Visit our website: www.daltools.com [More Documentation \(PDF\)](#) [Web Demonstration](#)

Copyright dalTools Ltd., 2011. All rights reserved.

Ok

Help

1.0_006 09-13-2011



Help

Command: dal delay

Options tab

- Highlight all Fixed Nets - Highlights all fixed nets for easy identification.
- Highlight all UnFixed Nets - Highlights all unfixed nets for easy identification.
- Rat All Highlighted net(s) - Rats all highlighted nets for selective ratsnest display.
- UnRat All Highlighted net(s) - unrats all highlighted nets for selective ratsnest display.
- Fix All Highlighted net(s) - Adds the fixed property to all highlighted nets.
- UnFix All Highlighted net(s) - Removed the fixed property from all highlighted nets.

Sort graph by netname - Sorts the graph by netname instead of the delay length value.

Graph tick value: - Value in time or length, depending on units used, for the target x axis reference marks.

Back

Visit our website: www.daltools.com More Documentation (PDF) Web Demonstration

Copyright dalTools Ltd., 2011. All rights reserved.

Ok