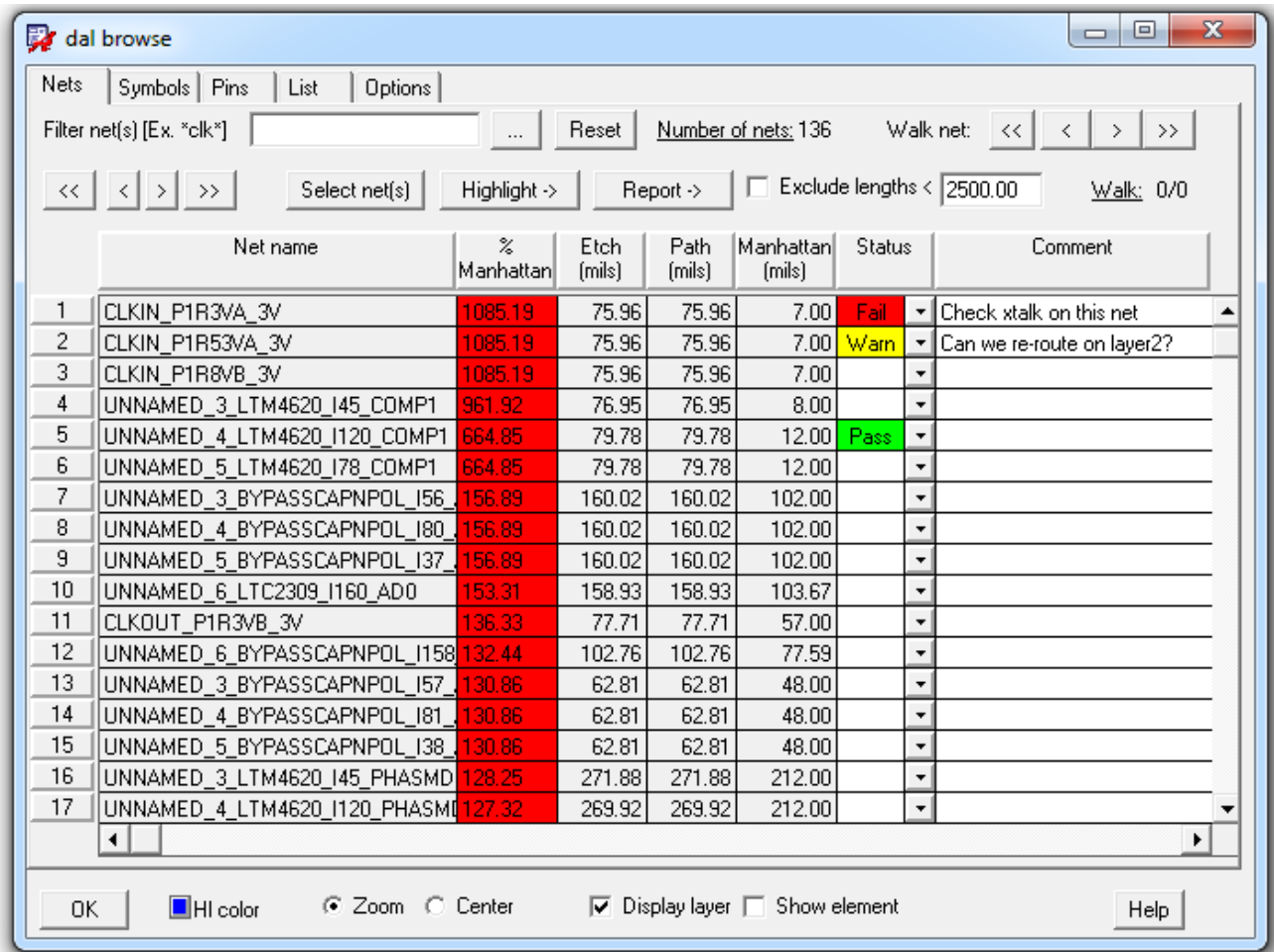


## Browse

Comprehensive symbol, pin and net browser tool. Allows the Electrical Engineer, PCB Designer or Lab Technician to browse, check and mark up the database with any needed modifications.

Features:

- ❑ Facilitates fast checking and verification of nets, routing and placement.
- ❑ Highlight, zoom, center and walk object contents
- ❑ Displays %manhattan length to verify routing lengths.
- ❑ Will also work in the Allegro Viewer Plus editor.



# Symbols

The screenshot shows the 'dal browse' application window. At the top, there are tabs for 'Nets', 'Symbols', 'Pins', 'List', and 'Options'. Below the tabs is a filter field with the text 'Filter refdes [Ex. U\*]' and a 'Reset' button. To the right, it says 'Number of symbols: 189'. Below the filter field are navigation buttons: '<<', '<', '>', '>>', 'Select symbols(s)', and 'Highlight ->'. The main area is a table with the following columns: Refdes, Name, Side, #Pins, XY, Status, and Comment. The table contains 18 rows of data, numbered 17 to 33. At the bottom of the window, there is a status bar with buttons for 'OK' and 'Help', and several checkboxes: 'HI color' (checked), 'Zoom' (selected with a radio button), 'Center' (unselected), 'Display layer' (checked), and 'Show element' (unselected).

	Refdes	Name	Side	#Pins	XY	Status	Comment
17	C2	SM_7343-21	Bottom	2	(295.0 1175.0)		
18	C3	SM_1206C	Top	2	(3275.0 1175.0)		
19	C4	SM_0402C	Bottom	2	(2900.0 570.0)		
20	C5	SM_1206C	Bottom	2	(2815.0 1160.0)		
21	C6	SM_0402C	Bottom	2	(2965.0 695.0)		
22	C7	SM_1206C	Top	2	(2825.0 1175.0)		
23	C8	SM_0402C	Bottom	2	(3215.0 695.0)		
24	C9	SM_0603C	Bottom	2	(3205.0 805.0)		
25	C10	SM_0402C	Top	2	(1370.0 875.0)		
26	C11	SM_7343-21	Bottom	2	(3330.0 390.0)		
27	C12	SM_7343-21	Top	2	(2615.0 645.0)		
28	C13	SM_0402C	Bottom	2	(3145.0 720.0)		
29	C14	SM_7343-21	Bottom	2	(2660.0 725.0)		
30	C15	SM_0402C	Top	2	(1055.0 1145.0)		
31	C16	SM_1206C	Top	2	(2695.0 415.0)		
32	C17	SM_1206C	Top	2	(3365.0 415.0)		
33	C18	SM_1206C	Top	2	(3165.0 415.0)		

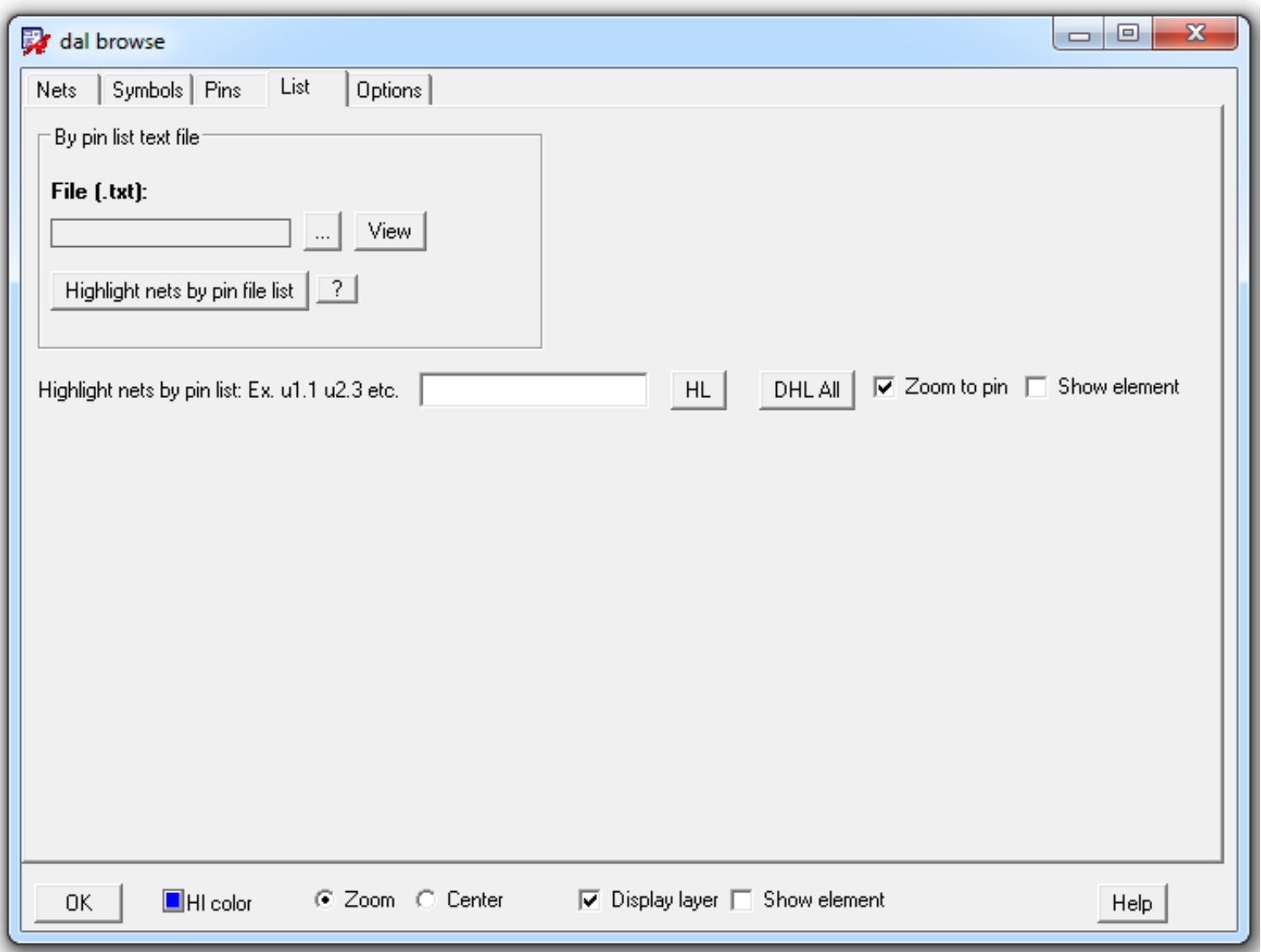
# Pins

The screenshot shows the 'dal browse' application window. At the top, there are tabs for 'Nets', 'Symbols', 'Pins', 'List', and 'Options'. Below the tabs is a search bar with the text 'Filter pins [Ex. U\*.1]' and a 'Reset' button. To the right of the search bar, it says 'Number of pins: 918'. Below the search bar are navigation buttons: '<<', '<', '>', '>>', 'Select pin(s)', and 'Highlight ->'. The main area is a table with the following columns: Pin name, Net name, Symbol, Status, and Comment. The table contains 27 rows of data, with rows 829 through 845 visible. Rows 829, 830, 833, 834, 835, 836, 837, 838, 839, and 840 are highlighted in yellow. At the bottom of the window, there are buttons for 'OK', 'Help', and a set of checkboxes: 'HI color' (checked), 'Zoom' (checked), 'Center' (unchecked), 'Display layer' (checked), and 'Show element' (unchecked).

	Pin name	Net name	Symbol	Status	Comment
829	R90.1	MED_4_BYPASSCAPNPOL_	SM_0402R		
830	R90.2	MED_4_LTM4620_I120_CC	SM_0402R		
831	R160.1	NAMED_6_MCP23S18_I14_	SM_0402R		
832	R160.2	SPI_S0	SM_0402R		
833	U1.1	MED_3_BYPASSCAPNPOL_	MSOP-8		
834	U1.2	GND	MSOP-8		
835	U1.3	PM1_INTVCC	MSOP-8		
836	U1.4	P1R8VA_IS	MSOP-8		
837	U1.5	NAMED_3_INA225_I128_G	MSOP-8		
838	U1.6	NAMED_3_INA225_I128_G	MSOP-8		
839	U1.7	GND	MSOP-8		
840	U1.8	MED_3_BYPASSCAPNPOL_	MSOP-8		
841	U2.1	NAMED_6_74LVC04_I139_	S-PVQFN-N14		
842	U2.2	EN_P1R3VA_3V	S-PVQFN-N14		
843	U2.3	NAMED_6_74LVC04_I139_	S-PVQFN-N14		
844	U2.4	EN_P1R3VB_3V	S-PVQFN-N14		
845	U2.5	NAMED_6_74LVC04_I139_	S-PVQFN-N14		

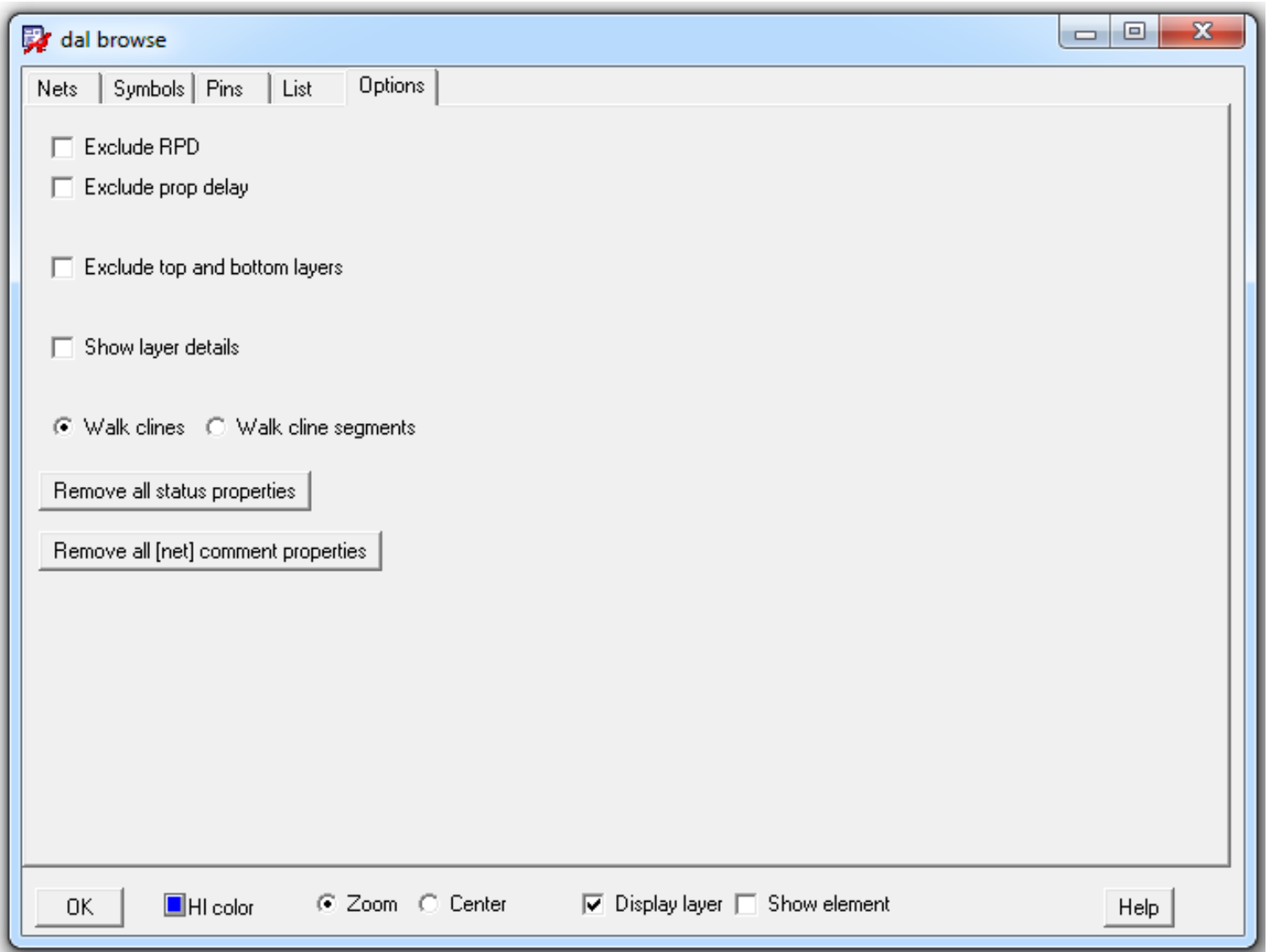
# List

---

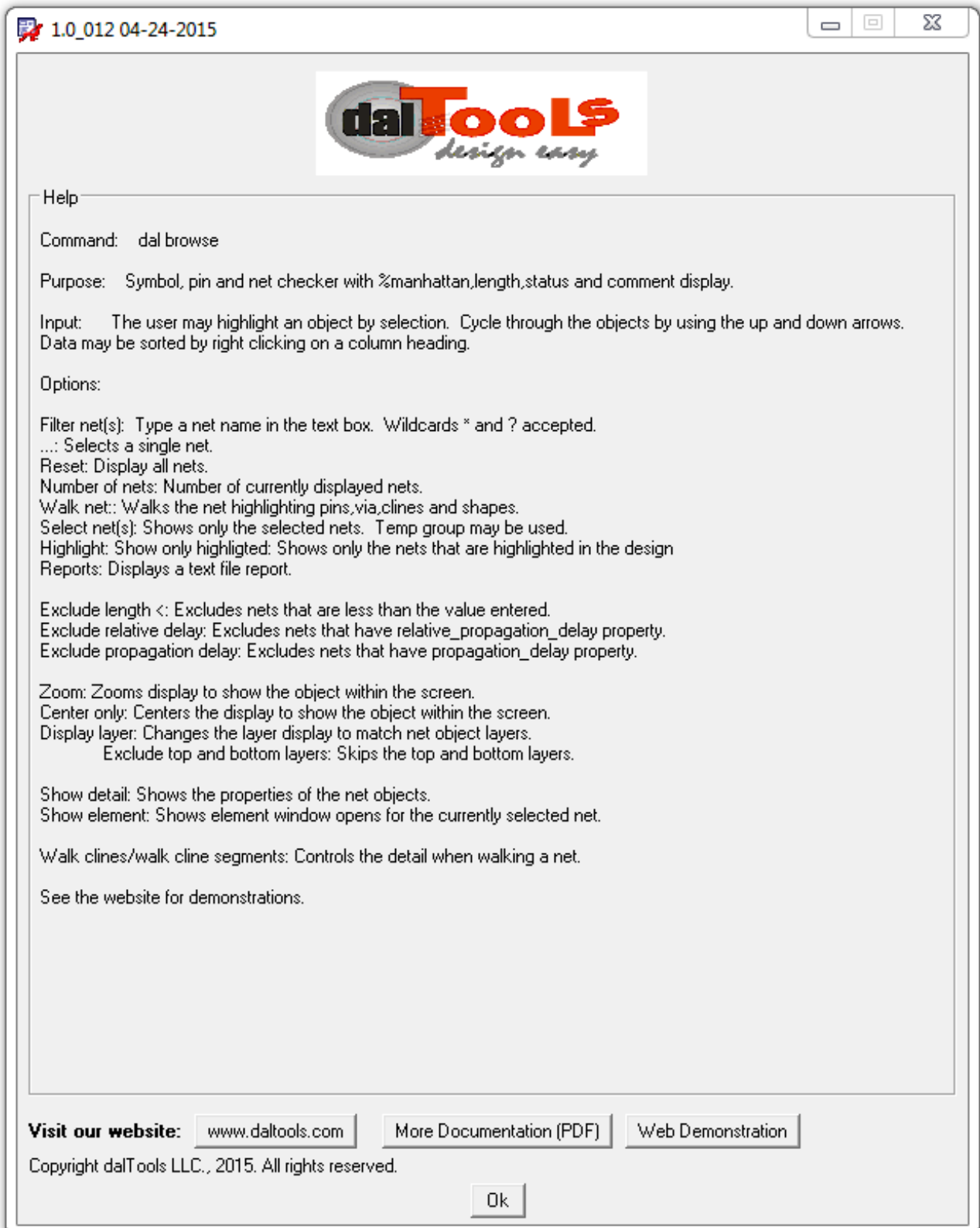


# Options


---



# Help



1.0\_012 04-24-2015



## Help

**Command:** dal browse

**Purpose:** Symbol, pin and net checker with %manhattan,length,status and comment display.

**Input:** The user may highlight an object by selection. Cycle through the objects by using the up and down arrows. Data may be sorted by right clicking on a column heading.

**Options:**

**Filter net(s):** Type a net name in the text box. Wildcards \* and ? accepted.

**...:** Selects a single net.

**Reset:** Display all nets.

**Number of nets:** Number of currently displayed nets.

**Walk net:** Walks the net highlighting pins,via,clines and shapes.

**Select net(s):** Shows only the selected nets. Temp group may be used.

**Highlight:** Show only highlighted: Shows only the nets that are highlighted in the design

**Reports:** Displays a text file report.

**Exclude length <:** Excludes nets that are less than the value entered.

**Exclude relative delay:** Excludes nets that have relative\_propagation\_delay property.

**Exclude propagation delay:** Excludes nets that have propagation\_delay property.

**Zoom:** Zooms display to show the object within the screen.

**Center only:** Centers the display to show the object within the screen.

**Display layer:** Changes the layer display to match net object layers.

**Exclude top and bottom layers:** Skips the top and bottom layers.

**Show detail:** Shows the properties of the net objects.

**Show element:** Shows element window opens for the currently selected net.

**Walk clines/walk cline segments:** Controls the detail when walking a net.

See the website for demonstrations.

**Visit our website:** [www.daltools.com](http://www.daltools.com) [More Documentation \(PDF\)](#) [Web Demonstration](#)

Copyright dalTools LLC., 2015. All rights reserved.

Ok