

Installation and Setup Help



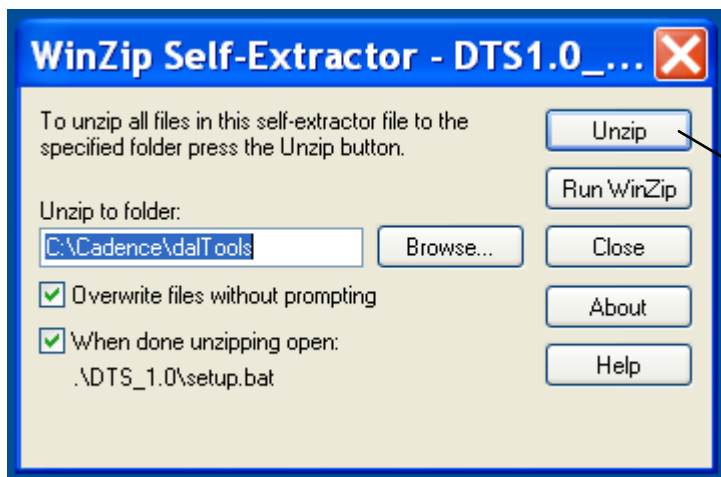
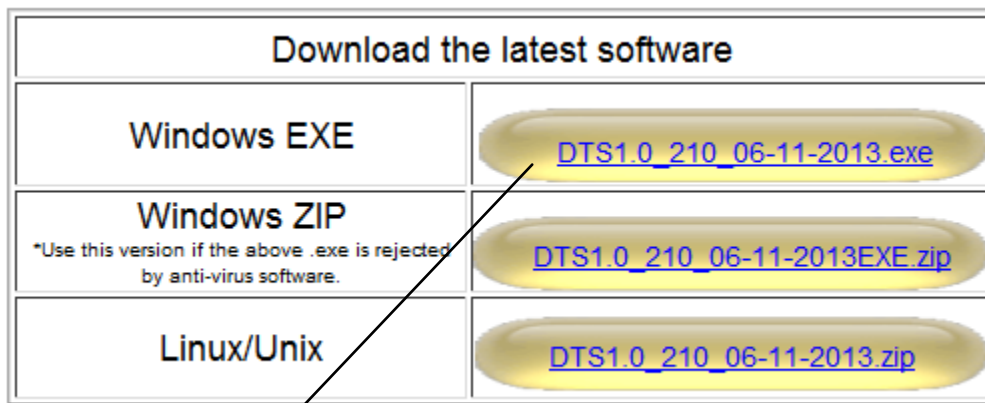
Hint: Click on a hyperlink below:

1. [Single Computer Installation](#)
2. [Company Site Installation](#)
3. [Licensing](#)
4. [Menu](#)
5. [Command Logging](#)
6. [HDL Installation \[Single Computer Automatic\]](#)
7. [HDL Installation \[Shared Site Manual\]](#)
8. [Linux Installation](#)
9. [OrCAD Installation](#)
10. [FAQ](#)



1. Single Computer Installation

1. Download and install the software here: www.daltools.com/support.html.
2. Request the licence here: www.daltools.com/evaluation. The license will be sent to your email address.
3. Place the license.dat and license.txt in the "...\DTS_1.0\license" directory.



2. Company Site Installation

;Copy/paste all the following lines below including this one into your \$cds_site allegro.ilinit file usually located here:
\$cds_site/pcb/skill/allegro.ilinit

;This text file is located in the dalTools setup directory: ../dalTools/DTS_1.0/setup/example_allegro.ilinit

;Then modify the dts_admin name and the directory locations of the dts_root and dts_lic_file variables.

Start dalTools allegro.ilinit site installation section. See setup.pdf or www.daltools.com/support.html for more information.

axlSetVariable("dts_admin" "putYourAdminLoginNameHere") ;Recommended - Sets admin privileges for dalTools setup access so users cannot change settings. May be more than one admin name separated by spaces.

axlSetVariable("dts_root" "C:/Cadence/dalTools/DTS_1.0") ;Path to the dalTools software directory.

axlSetVariable("dts_lic_file" "C:/Cadence/dalTools/DTS_1.0/license/license.dat") ;Path to the dalTools license file.

;axlSetVariable("dts_log" t) ;Turns on optional command logging. If enabled writes all user activity in the line belows location. "dal setup" has a button to summarize the data.

axlSetVariable("dts_log_dir" "C:/Cadence/dalTools/DTS_1.0/license/logs") ;This is the location where the usage logs are stored.

axlSetVariable("dts_menu_dyn" t) ;If set automatically loads/adds the dalTools menu to the existing Allegro menu on the right side.

load(strcat(axlGetVariable("dts_root") "/bin/dal") "dalTools"),dal("start");dalTools startup.

End dalTools site installation section.

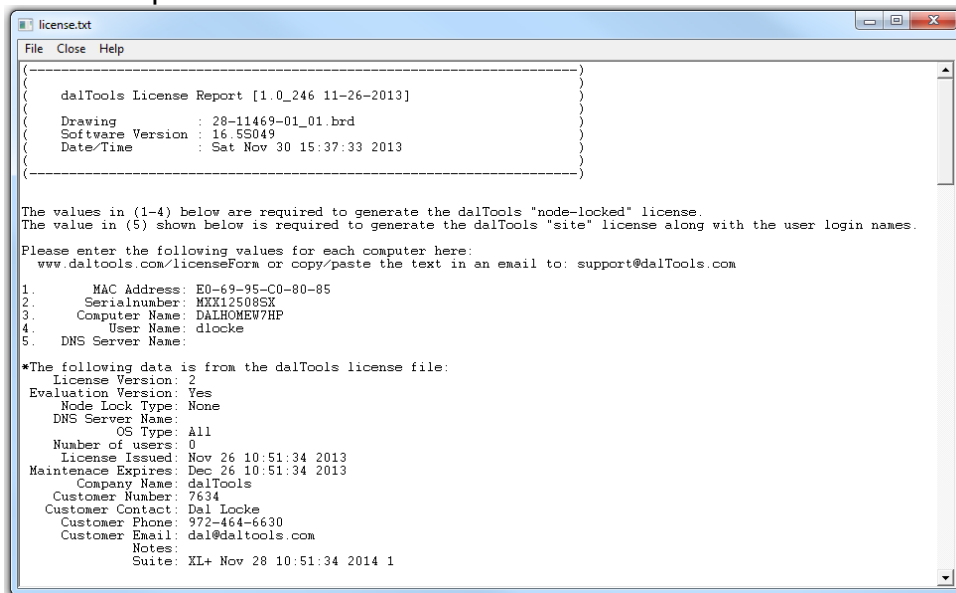
3. Licensing

dalTools and its customers understand the importance of remaining compliant when it comes to licensing our products. Therefore, we offer three different options to license our products which are shown below as either permanent or lease models. In all cases, however, the license model is never check-in or check-out in order to prevent user access conflicts or denial of service.

1. Network license restricted by user and network server name.
2. Node lock license restricted by CPU board serial number.
3. Temporary evaluation license unrestricted for all users and computers.

dalTools permanent licenses are sold per user or network server seat and require the unique CPU board serial number or company DNS server suffix name. To obtain the required information please do the following:

1. Download and install the dalTools software. There is no need for the license at this point.
2. Type “dal setup” in the Allegro command window at the bottom of the screen.
3. Click on the “License info” button. This form will appear:
4. Copy/paste this text info to support@daltools.com or click the email button in the setup form.



```
license.txt
File Close Help
-----
dalTools License Report [1.0_246 11-26-2013]
-----
Drawing      : 28-11469-01_01.brd
Software Version : 16.55049
Date/Time    : Sat Nov 30 15:37:33 2013
-----

The values in (1-4) below are required to generate the dalTools "node-locked" license.
The value in (5) shown below is required to generate the dalTools "site" license along with the user login names.
Please enter the following values for each computer here:
www.daltools.com/licenseForm or copy/paste the text in an email to: support@dalTools.com

1. MAC Address: E0-69-95-C0-80-85
2. Serialnumber: MXX12508SX
3. Computer Name: DALHOMEW7HP
4. User Name: dlocke
5. DNS Server Name:

*The following data is from the dalTools license file:
License Version: 2
Evaluation Version: Yes
Node Lock Type: None
DNS Server Name:
OS Type: All
Number of users: 0
License Issued: Nov 26 10:51:34 2013
Maintenance Expires: Dec 26 10:51:34 2013
Company Name: dalTools
Customer Number: 7634
Customer Contact: Dal Locke
Customer Phone: 972-464-6630
Customer Email: dal@daltools.com
Notes:
Suite: XL+ Nov 28 10:51:34 2014 1
```

5. dalTools will then email the permanent license file. Place the license.txt and license.dat files in the dalTools license directory.
1. Smaller companies generally choose the node lock license method when the number of users is less than 4.
2. Larger companies generally use the user and server name based license. With this method users can use dalTools on any computer that is on the company network.

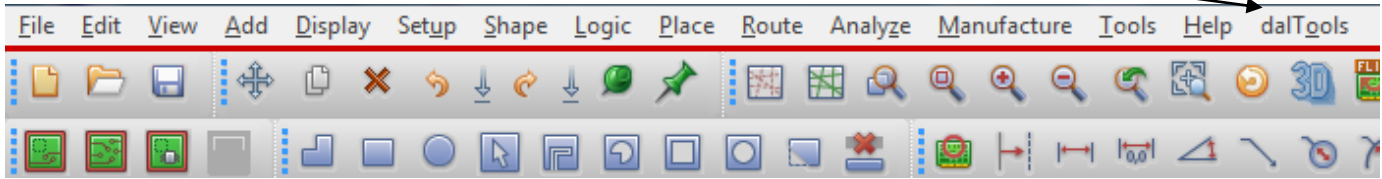
Please send the following information in **.csv** format if you are going to utilize the user/server name model:

#Login Name,First & Last Name,Email,Phone

johnDoe,John Doe,jdoe@acme.com,555-555-5555

Maintenance: Yearly maintenance fees apply after the first year in order to continue to receive software updates, phone, email service and support. This must remain in effect continuously without gaps as described in the dalTools software license agreement.

4. Menu



There are two ways to set up the dalTools menu in the Allegro main window.

1. The preferred and the easiest method is to check the “**Load dalTools PCB menu (dynamic)**” button. This will **add** the dalTools menu to the existing menu when Allegro is started. It automatically stays up-to-date with future changes to the menu from daltools.

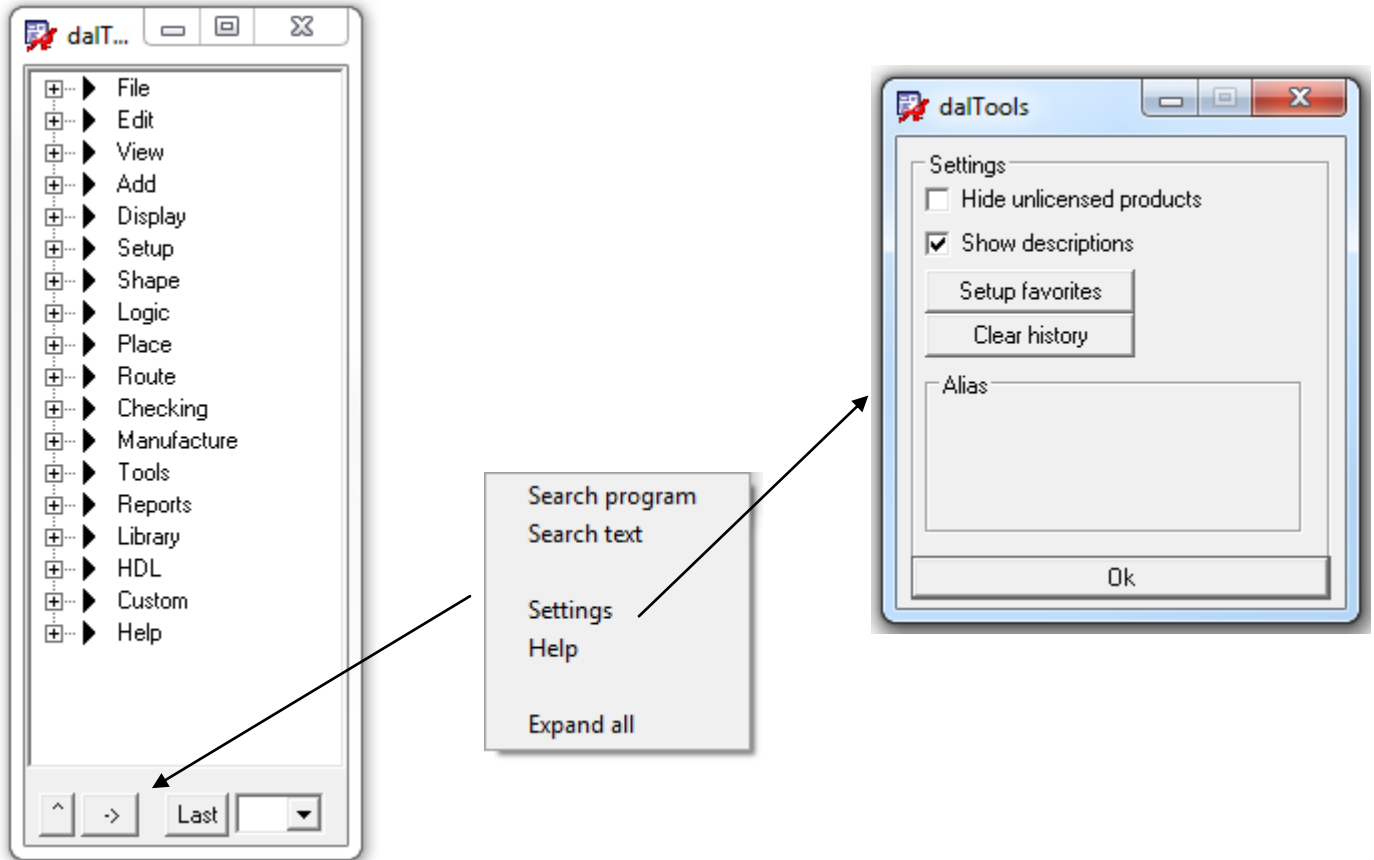
The optional env variable “**dts_menu_offset**” controls where the dalTools menu is positioned. For example, the default is **set dts_menu_offset = 100** and puts it all the way on the right. A value of **-1** puts it just to the left of the Help menu item.

2. If you have not customized your Allegro menu already then you could also click “**Load dalTools PCB Menu (static)**.” This will simply put the dalTools menu first in the menupath:



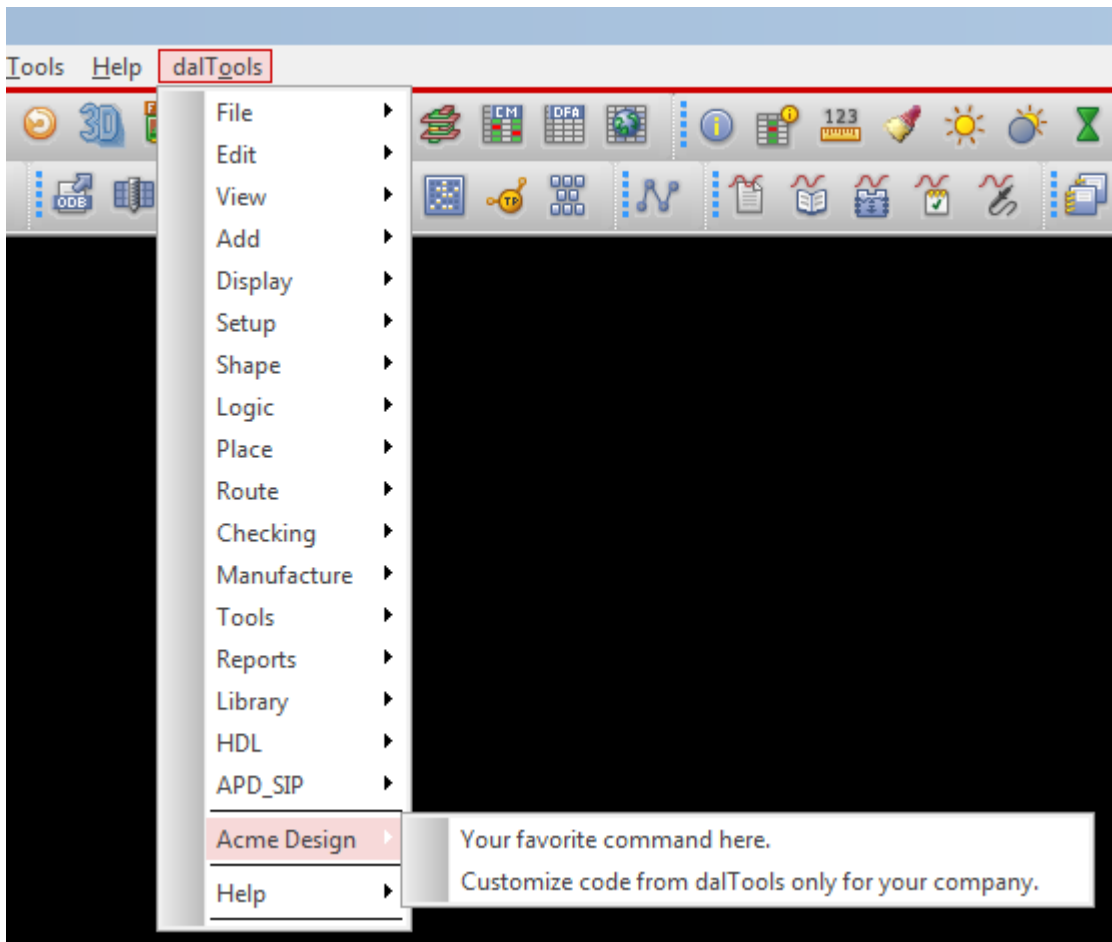
Menu (cont)

There is another GUI type menu available by typing: dal menu. This is what it looks like:

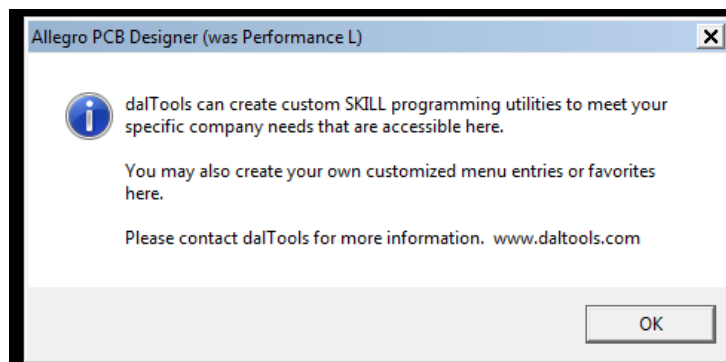


Menu (cont)

You may add your own **company specific or favorite menu items** to the dalTools menu as show below:



The menu items could also be customized commands created specifically for your company by dalTools. Contact dalTools for more information about this service.



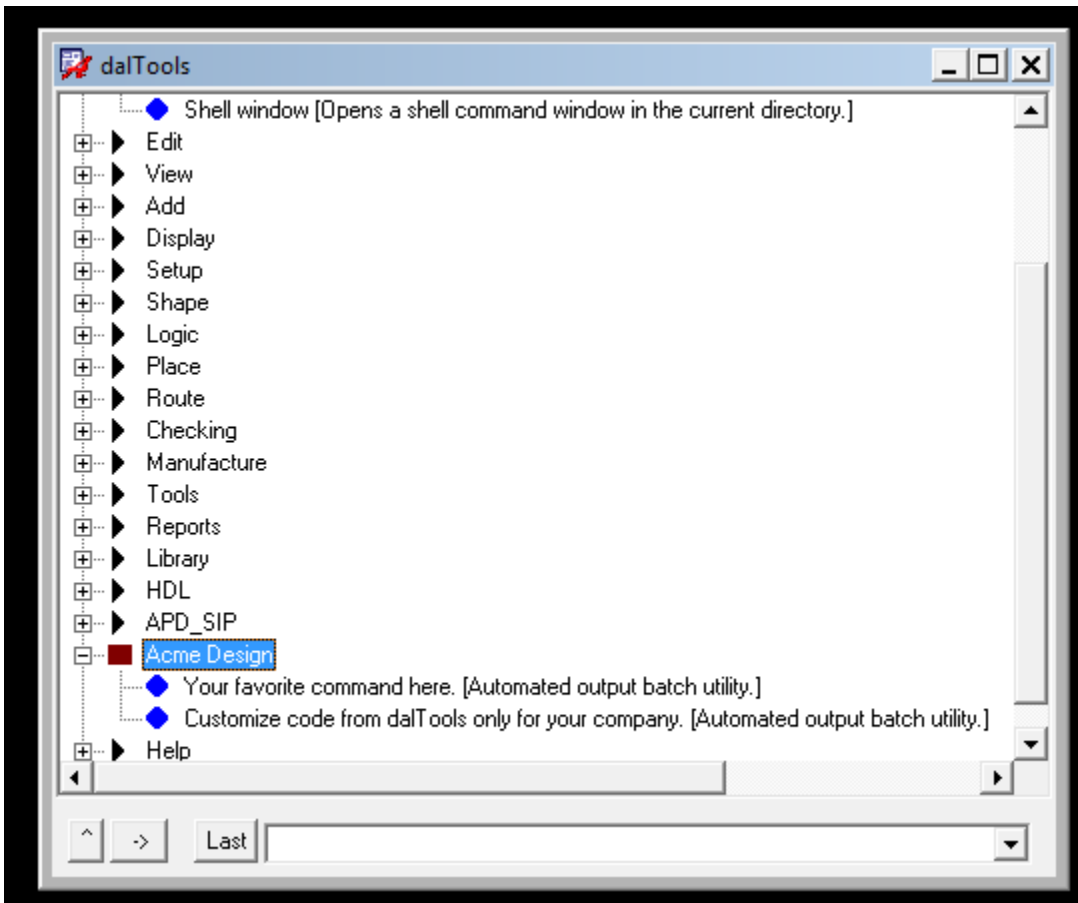
Menu (cont)

This is what the file name and contents look like:

```
dalMenuInsert_AcmeDesign.il  
  
1 This file is loaded/added to the dalTools menu.  
2 ;Multiple menu entries for all files that start with: dalMenuInsert_ .il will display in the menu.  
3 ;A optional environment variable named "DTS_MENU_CUSTOM" may be used if desired to point to a different menu directory instead in the default dalTools bin directory.  
4  
5 axlUIMenuInsert(ml 'popup "Acme Design")  
6 axlUIMenuInsert(nil "Your favorite command here." "dal yourFav") ;Automated output batch utility.  
7 axlUIMenuInsert(nil "Customize code from dalTools only for your company." "dal yourCmd") ;Automated output batch utility.  
8
```

This file when located in the dalTools bin directory will automatically be added to the dalTools menu at the bottom. Also note that you may have more than one file that will add multiple entries in the menu.

The dal menu command also displays the customized entries:



Menu (cont)

A sample menu template file is located here: ...\\dalTools\DTS_1.0\share\site\menus

If you would like to locate the menu file in a location other than the dalTools/bin directory you may set the following variable in the env file or allegro.ilinit file to point to another location:

Ex: DTS_MENU_CUSTOM = your /customDefined/menuPath

Or in the allegro.ilinit file:

`axlSetVariable("dts_menu_custom" "your/customDefined/menuPath") ;Sets the custom defined menupath.`

Note: If you don't want your company specific menu to show up in the dalTools menu, add the following line to your allegro.ilinit file before the dalTools line (`axlShell("source ./dts_site/dts.env"),dtsRoot=getShellEnvVa.....`):

`axlSetVariable("dts_no_menu_custom" t) ;Disables the custom company menu.`

5. Command Logging

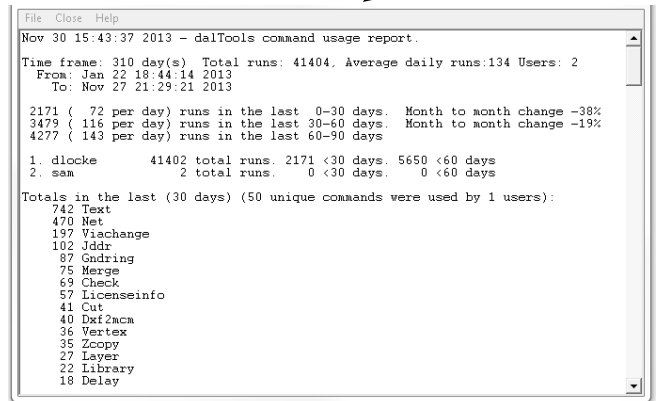
The “Log dalTools command usage” button enables record tracking of every dalTools command entered by all users to a log file. The sample .csv file below shows the types of data logged. The data is stored (appended) in a file named for each user. If the logs directory does not exist it is created automatically.

```
# dalTools version 1.0_197 01-21-2013
# This file is computer generated.
# Type "dal setup" at the Allegro command prompt or run s
# Priority is the Operating System setting, this file, th

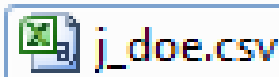
set dts_root = $HOME"Cadence/dalTools/DTS_1.0"
set dts_lic_file = $HOME"dalToolsDev/DTS_1.0/license/lice
set dts_site
set dts_log
set dts_log_dir = $DTS_ROOT/license/logs
set dts_menu
```

```
[L:\pcbenv\dts_site\dts.env]
```

The above file, dts.env is created automatically based on the settings in the “dal setup” command. Note the dts_log_dir may be changed from the default location shown.

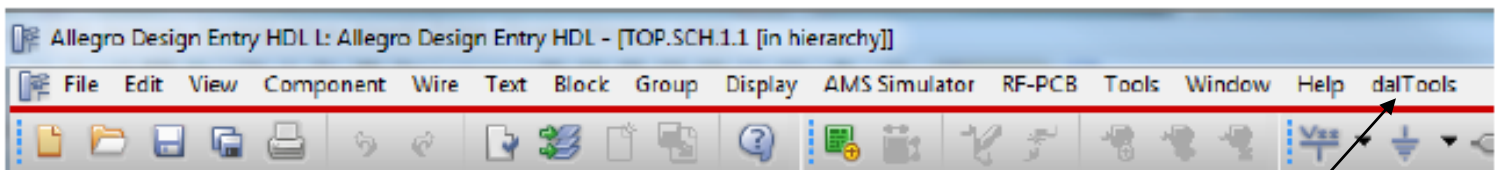


	A	B	C	D	E	F	G	H
1	Date	Command	Login	Board	Computer Name	DTS Version	CDS Version	CDS Exit Status
2	1/21/2013 23:52	cut	j_doe	unnamed.brd	J_DOE-1	1.0_197 01-21-2013	16.3	Clean
3	1/21/2013 23:52	stretch	j_doe	unnamed.brd	J_DOE-2	1.0_197 01-21-2013	16.3	Clean
4	1/21/2013 23:52	measure	j_doe	unnamed.brd	J_DOE-3	1.0_197 01-21-2013	16.3	Clean
5								



6. HDL Installation [Single Computer -Automatic]

1. To automatically configure the dalTools HDL menu locally, click the “Install/update the dalTools HDL Design Entry Menu in the dal setup GUI. The cdssetup directory is automatically changed.



7. HDL Installation [Shared Site - Manual]

The dalTools HDL commands utilize the Cadence MPS system to communicate between the HDL editor and the Allegro symbol editor or the Free_viewer_plus editor. The reason we do this is because the HDL editor does not have a built in SKILL GUI interface. The MPS sends signals between the two editors so GUI's may be utilized on the HDL side. In order to make the MPS work the following environment settings must be modified.

1. **To manually configure the dalTools HDL menu for a company shared site environment, follow these instructions.** Note: Sample files are located in the ...\\dalTools\DTS_1.0\share\SPB_16.X directories for copying and pasting below into your cds_site files.

1. Find the **cdssetup** directory in your company cds_site directory. This is the location where the shared files will be modified. Be sure and back up the original files before proceeding in case you need to revert back later. For example, the directory **may** be located here:

C:\Cadence\SPB_16.X\share\local\cdssetup

2. These 2 directories should reside in this location: **concept and fet**. If not you can copy starter files from here: C:\Cadence\SPB_16.X\share\cdssetup

Inside the **concept** directory there should be the following files:

concepthdl.scr (This script runs when HDL starts)

concepthdl_cmd.txt (This file controls the menu defined commands)

concepthdl_key.txt (This file controls the shortcut keys)

concepthdl_menu.txt (This file defines the HDL menu)

3. Add the following to the end of the **concepthdl.scr** file:

```
{Start dalTools section}
```

```
mpsdeclare dal
```

```
    {This is the main program launcher that uses allegro for the GUI.}
```

```
    mpstool=dalHdlServer
```

```
    mpstimeout=25
```

```
    mpsruncommand="cnskill -nograph dalHdlConfig.il" {Use -i option for debugging.}
```

```
{End dalTools section}
```

4. The **concepthdl_cmd.txt** file should look like this:

```
* concepthdl_cmd.txt file, written 06/08/98 11:49:11 */
```

```
FileVersion 1;
```

```
DAL "Main program launcher" "Main program launcher" "dal" ;
```

5. The **concepthdl_key.txt** file does not need to be modified.

6. Add or paste the following from the sample share file into the concepthdl_menu.txt file:

```
"dalTools" {
    "dal (Launch and link the Allegro Drawing Editor)" DAL;
}
```

So the end of the file should look like this with the closing }

```
        "&Education Services" _HELP_WEB_EducationServices;
    }
    SEPARATOR;
    "&About" _WINDOW_ABOUT;
}
"dalTools" {
    "dal (Launch and link the Allegro Drawing Editor)" DAL;
}
}
```

7. Inside the ...cdssetup\fet directory there is a "skill" directory. Inside this directory there are two directories named: **allegro and context**.

Next, add or modify the files in the...cdssetup\fet\skill directory.

Copy the sample file or Create a file in the ...cdssetup\fet\skill\alegno directory named:

dalHdl.scr

Inside this file add a line containing: dal hdl ;This runs the dalHdl routine that imports the MPS service and starts the menu with the HDL tree open.

8. In the ...cdssetup\fet\skill\context directory there should be two files:

dalHdlConfig.il and stdAcces.il

The dalHdlConfig.il contains:

;This file is computer generated after running the HDL menu setup in the "dal setup" command.

```
defun(dalHdlConfig ()
```

```
    let(
```

```
        (localenv)
```

```
        isLinux = nil ;Set = t if Linux OS
```

```
        isDrawing = t ;Set = nil if you want to use the FREE_VIEWER_PLUS.
```

```
        localenv = "L:/" ;This is the base directory where the local or cds_site cdssetup directory resides.
```

```
    );end let
```

```
);end defun
```

```
printf("W- Using dev directory.\n")
```

```
file = "L:/dalTools/DTS_1.0/bin/dalHdl"
```

```
if(isFile(file) then
```

```
    load(file "dalTools")
```

```

dalHdlServerStart()
else
    opts = cnSetRunOptions(?result cnOUT_VERBOSE)
    cmd = "echo E- There was a problem loading a file. Check the path in
$localenv/cdssetup/fet/skill/context/dalHdlConfi.il or rerun dal setup in the pcb editor to
correct."
    cnSendCommand(cnmpsImport() sprintf(nil "%s",cmd) ?runOptions opts)
);end if

```

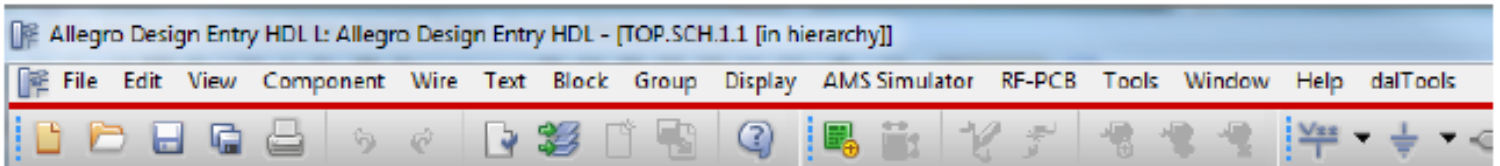
The other file in the ...cdssetup\fet\skill\context directory is named: **stdAccess.il**

This is a Cadence supplied set of SKILL functions for HDL that is required. If it does not reside here by default then copy it from here:

C:\Cadence\SPB_16.6\tools\fet\varieant\context

No modifications need to be made to the stdAccess.il file.

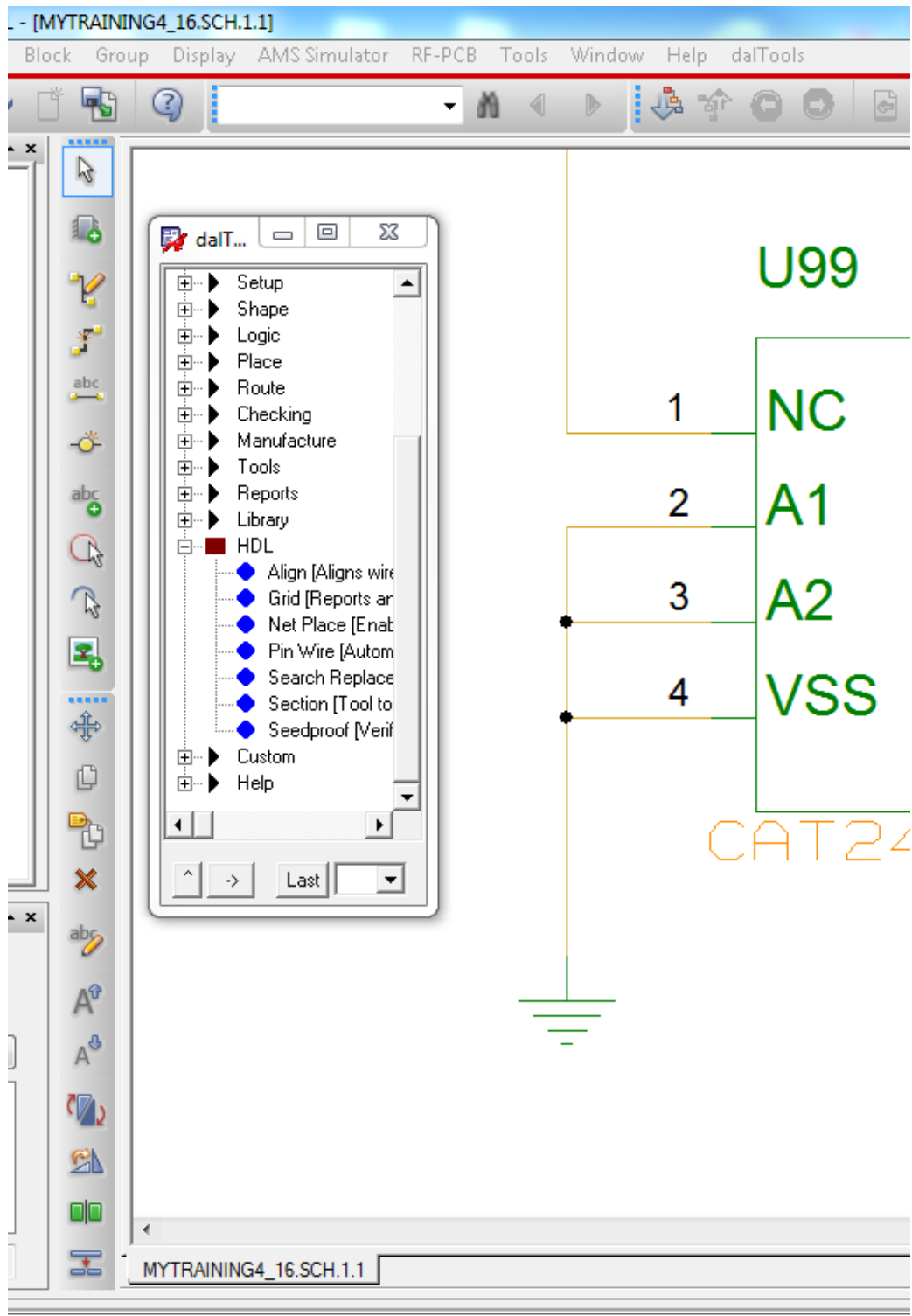
When HDL is started now you should have a dalTools menu in the upper right of the screen.



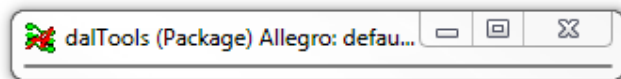
When you click on the dal menu, a symbol editor or free_viewer_plus editor should open with the dalTools command menu displayed. From there you may run the HDL command that will interface with the HDL editor. Hint: Click on the center “_” window sizer button in the upper right of the Allegro window to minimize the editor since only the floating dalTools menu needs to remain visible on the screen.

If you have problems try temporarily adding the -i option in the concepthdl.scr file. This will allow you to see error messages in the black console window. Also, sometimes the MPS service will hang in certain conditions. Start the windows task manager, goto the services tab and look for a service called cdsmps.exe and/or cnskill.exe. Ending those processes will often correct issues when the MPS service hangs or does not start.

Below is what the menu will look like:



Inc



Error Messages

1. If you get this error message when the HDL menu loads:

ERROR(SPCOCN-1908): <install_path>/cdssetup/concept/concepthdl_menu.txt: error on line 100:

Do the following:

1. Make a backup of the existing menu file.
2. Launch DEHDL.
3. Select Tools->Customize
4. Choose the Menus tab and click the Reset button.
This will restore the menu to the original installation content. Then review the copied (corrupt) concepthdl_menu.txt file and add in the desired changes, but do so using the DEHDL GUI.

HDL tips:

1. On Linux, the interactive `cnskill -i -nograph` DOES NOT WORK like windows does since the process is not synchronous and Cadence does not support it. You MUST run from the `concepthdl.scr` file through the editor or open a shell and type: `cnskill -i -nograph -mpsession dlocke_ProjectMgr19842 path/whatever.il` The `dlocke_ProjectMgr19842` will of course be different for you and is obtained with the `mpsinfo` command from the shell window. The errors in runtime if any can be viewed from the handle. Ex `handle->??`
2. `cnskill -i -nograph -mpsession dlocke_ProjectMgr19842 /home/dlocke/cdssetup/fet/skill/context/dalHdlConfig.il`
3. Be sure `$CDS_SITE` is set on the linux env so the `dalHdlConfig.il` file will be found in the skill search path.

8. Linux Installation

Automatic or Manual Installation

There are two ways to install dalTools depending on how your environment is set up.

The first is automatic and works in most cases where the allegro.ilinit file resides in the \$localenv path. To install automatically just follow the GUI prompts during install.

The second is manual and is used in the case where you have a site directory setup for a common environment within the entire company. This case requires copying one line into your site allegro.ilinit file and copying a dts_site directory to that location. It is actually very simple how it works. See the detailed information provided below.

Details about what happens during an "automatic" install

The information below will help explain exactly what happens when you run setup.sh or how to install manually. We have tried to make it as easy and simple as possible for most sites that can just run it automatically without issue with only a couple of clicks. It is actually very simple in that it only adds one line to the allegro.ilinit file. The env files in the dts_site directory are optionally changed/sourced automatically based on what settings are checked in the setup gui.

There are absolutely no other modifications to the site or user env files. Checking "Use daltools menu" just puts the daltool menu temporarily at the front of the menupath variable. You can check it off and on and not hurt anything. The use dalTools DTS_SITE just sources those custom env files after "your" pcbenv file is sourced. You can always click that on and off and nothing bad will happen.

1. This is what is in the setup.sh file: "allegro -p ./setup/start -s setup.scr"

It simply starts allegro and runs the setup.scr as a convenience.

2. This is what is in the setup.scr file:

```
(unless(procedurep(getd('dal')),load("../bin/dal" "dalTools")),dal("install")) ;dalTools installation.
```

This is SKILL and it loads the install setup gui OR loads the skill startup command "dal".

All dalTools commands are prefixed with dal for example: "dal cut".

By removing that single line in the allegro.ilint file, dalTools is actually completely un-installed.

Notes:

1. There may be an issue with invoking PDF documents too in Linux.

This is a note from Cadence: On UNIX, the only supported PDF viewer is Acroread. The program, Acroread,

must be in your PATH.

2. Only click the "Install/update the dalTools HDL Design Entry menu" if you plan on using the dalTools HDL commands in the schematic editor.
3. After you install dalTools and take a look at the allegro.ilinit file and dts_site files, you should be able to figure out the best way to install at your entire site. Cadence offers many different ways to setup a site.

Customized site env? How to install dalTools manually

1. Unzip the pcbenv directory obtained here: <http://daltools.com/files/pcbenv.zip>
2. Add the line in that allegro.ilinit file to your existing site allegro.ilinit file.
3. Place the dts_site directory in the same directory as the site allegro.ilinit file.
4. Edit the file dts_site/dts.env file with the correct paths for your dts_root and the license file location.
5. Start Allegro and type dal menu. The dalTools gui menu should appear.

Notes:

1. This is the line in the allegro.ilinit file:

```
axlShell("source
./dts_site/dts.env"),dtsRoot=getShellEnvVar("dts_root"),when(dtsRoot,axlSetVariable("dts_ro
ot"
axlOSSlash(dtsRoot))),load(strcat(axlGetVariable("dts_root") "/bin/dal")
"dalTools"),dal("start");dalTools
startup.
```

- a. First it sources the dts.env to set the Allegro env variables in order to know where the software and license is located.
- b. Then it checks to see if you have an OS var defined for dtsRoot. When that is true it uses that instead of what is in the dts.env file.
- c. Next it loads the skill file dal in the bin directory with the password dalTools.
- d. Then it loads the start routine that loads the menu and the envs "IF" set in the dts.env file.

For reference, here is what is in the dts.env file:

```
# dalTools version 1.0_168 09-19-2012
# This file is computer generated.
# Type "dal setup" at the Allegro command prompt or run setup.bat to create or change this
file.
# Priority is the Operating System setting, this file, then the allegro.ilinit, and finally the
${localenv}/env file.
set dts_root = $HOME"Cadence/dalTools/DTS_1.0"
set dts_lic_file = $HOME"dalTools/DTS_1.0/license/license.dat"
unset dts_site
unset dts_menu
```

I have the OS \$HOME variable defined so I can use a SSD on different computers without regard to what the drive letter is. You will likely want to hard code the path there.

*You can manually paste the menu items in the dalTools/share/... directory to your already customized Allegro menu if you like.

How to install in Linux

1. Place the license.txt and license.dat in the daltools license directory.
2. chmod 777 setup.sh and then run.
3. The program will auto install. Select the desired menu and env configuration.
4. It should be good to go now. Please contact dalTools if you have any issues or questions.

OS Tips and recommendations:

1. We use CentOS Linux operating system. This is free. It includes almost everything you need pre-installed including firefox web browser, etc.
2. Download centos as a DVD iso image and install with the iso install option of VMWare. Hint: Wiki is good for finding information and download links. This can run in windows as a virtual machine or independently.
3. As root. "su root" install the ksh with this in the terminal: yum install ksh. Cadence REQUIRES ksh for the productinfo etc. It won't work without this.
4. In your pcbenv/env file there must be a line at the end with: set disable_opengl. Linux does not support opengl so the graphics won't work unless you do this.
5. Download the 5 Cadence tar files that have the base cadence release: SPB_16X.
6. Extract the tar files to one directory.
7. I suggest getting the latest iscape installation program from the web and replace the one in the CDROM directory FIRST. The base will install with ver 3.1 but the hotfix will require the latest version.
8. Run the setup.sh in the CDROM1 directory.
9. I suggest letting the iscape program install the base and the updates from the web.
10. Next you need to setup the os paths so the Cadence commands can be found.
11. Suggest using gedit editor and add this to the ~/.bashrc file:

```
export HOME=/home/<user>
export CDSROOT=/home/<user>/cadence/SPB163
export
PATH=$PATH:.$CDSROOT/bin:$CDSROOT/tools.lnx86/bin:$CDSROOT/tools.lnx86/pcb/bin
export CDS_LIC_FILE=5280@servername
```

You "should" be able to run "allegro" in the xterm now.

Hint: Under the top virtual machine settings you can mount your other windows drives very easily for access.

They will be mounted under /mnt/hgfs as the share name.

Web Browser note from Cadence:

On UNIX, supports only the browser, Netscape. If Netscape is not running, tries to start it. May not detect failure if the web page fails to load.

Note: Netscape must be in your search path.

You can override the program name using the environment variable:

```
set http_netscape = <program name>
```

For example:

```
set http_netscape = netscape405
```

Note: On UNIX, this function has been tested with Netscape only and may not function properly with another web browser.

On UNIX, the only supported PDF viewer is Acroread. The program, Acroread, must be in your PATH. The easiest way to install is with the System->Administration->Add/Remove Software button. Type

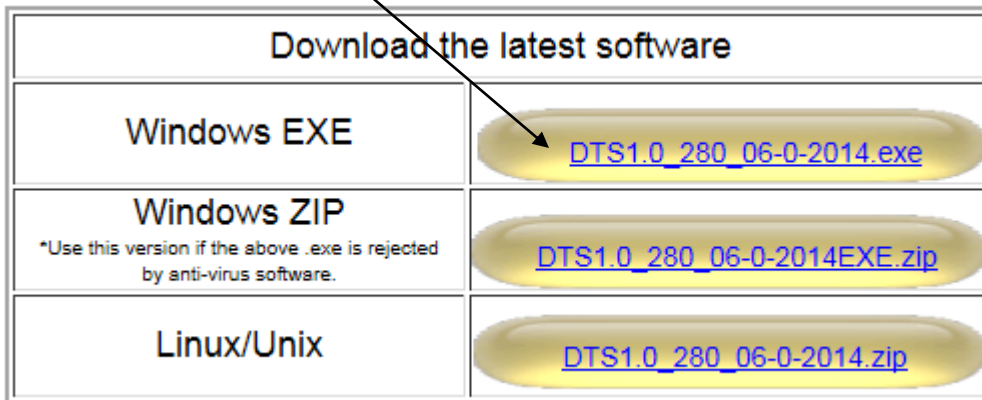
PDF in the search window and install the English version.

filemgr in the Allegro console does not work? Try changing this env variable: filemgr_unix to the correct file manager name.

9. OrCAD Installation

dalTools is compatible with OrCAD PCB Designer. However, dalTools will not auto install with the OrCAD products like Allegro does due to the fact that OrCAD does not support dynamic loading of SKILL. Please follow the instructions below to install dalTools manually in OrCAD.

1. Download the "Windows EXE" version from the web site here:
<http://daltools.com/support.html>



The .exe will unzip the files to the proper directory but the final part of the install will fail because the orCAD interactive SKILL limitation. At this point, backup your existing pcbenv folder and copy the directory located here to your pcbenv directory: www.daltools.com/files/pcbenv.zip

**Please be sure the dts_site directory and allegro.ilinit file are in the same directory that matches the \$localenv setting in Allegro. You can check this value in Allegro with echo \$localenv.

Then modify the paths in the dts_site/dts.env file to the proper locations. Example:

```
set dts_root = "C:/Cadence/dalTools/DTS_1.0"  
set dts_lic_file = "C:/Cadence/dalTools/DTS_1.0/license/license.dat"  
unset dts_site  
set dts_menu_dyn
```

*Do not modify the allegro.ilinit file. You may need to copy the dalTools line to your allegro.ilinit file if you already have entries in yours.

Then start orCAD and dalTools should now work. If the dalTools menu is not in the upper right of the screen, you can type: dal menu.

If this does not work correctly, please double check the paths in the dts.env file. The allegro.ilinit file will source the dts.env file to obtain the dts_root location and then autoload the dalTools starter routine. Please contact dalTools support if you have any questions or problems.

10. FAQ

1. The dal command is not working in the console window?

The allegro.ilinit file is missing and/or the dts_site directory is missing. Re-install the software.

2. What is the purpose of the allegro.ilinit file?

The allegro.ilinit is a SKILL command file that is executed when allegro is started. It may contain any SKILL commands. Its function is usually to set the skill path and certain environment variables at startup.

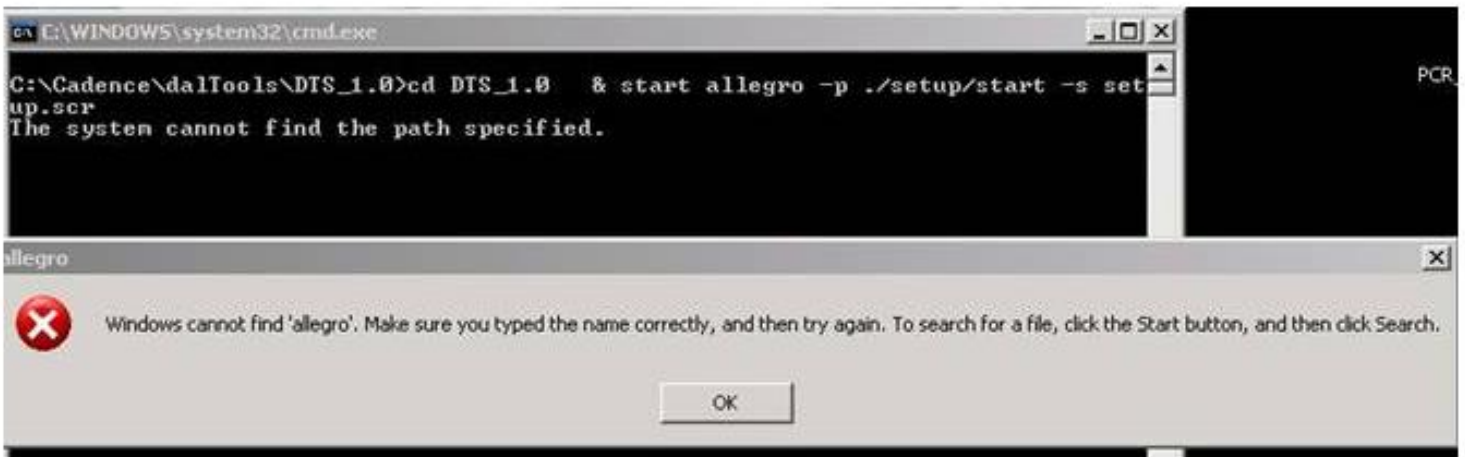
3. How do I set up a site specific environment?

See the daltools document "Setting up a custom allegro environment." At www.dalTools.com/support

4. How do I get help or report a problem with setting up the dalTools environment?

Goto www.dalTools.com/support and report a bug, documentation issue or request help.

5. What if this happens when I install:



This indicates that your operating system path is not pointing to the Cadence directories. In order to correct please do the following:

1. Right click on My Computer in the Start menu. Select properties. Click on the Advanced tab. Then click on Environment Variables. Then click on the PATH line in the System Variables window and click Edit. Add the following at the BEGINNING of the path:

```
%CDSROOT%\OpenAccess\bin\win32\opt;%CDSROOT%\tools\Capture;%CDSROOT%\tools\PSpice\Library;%CDSROOT%\tools\PSpice;%CDSROOT%\tools\specctra\bin;%CDSROOT%\tools\fet\bin;%CDSROOT%\tools\libutil\bin;%CDSROOT%\tools\bin;%CDSROOT%\tools\pcb\bin;
```

Then you must create a new variable named: CDSROOT and give it the value:

C:\Cadence\SPB_16.5 (*The C:\ prefix and 16.5 version may be different in your case)

6. dalTools did not auto install correctly for APD and the Sip editors.

Please check your env files to see if you are sourcing the apd.ilinit file and/or cdnsip.linit file. If so, please copy the dalTools line from the allegro.ilinit file into these files. This should correct the problem. By default, APD and Sip editors read the allegro.ilinit file only if the apd.ilinit or cdnsip.ilinit file do not exist.

7. I clicked on the Windows EXE download button and the file downloaded ok. But when I run the file it says:



This may occur on older Windows XP operating systems that use the default winzip installation. Please update to the latest winzip software and re-try. The free version works fine. Be sure and re-boot and re-download the .exe file from the web site to make sure everything is updated correctly.